

Datasheet for ABIN7301536

anti-CBL antibody (C-Term, pTyr700)

3 Images



[Go to Product page](#)

Overview

Quantity:	100 µL
Target:	CBL
Binding Specificity:	C-Term, pTyr700
Reactivity:	Human, Mouse, Rat
Host:	Rabbit
Clonality:	Polyclonal
Conjugate:	This CBL antibody is un-conjugated
Application:	Western Blotting (WB), Immunohistochemistry (IHC), Immunofluorescence (IF), Immunochromatography (IC)

Product Details

Immunogen:	KLH-conjugated synthetic peptide encompassing a sequence within the C-term region of human c-CBL (pY700).
Specificity:	Recognizes endogenous levels of c-CBL (pY700) protein.
Characteristics:	Rabbit polyclonal antibody to c-CBL (pY700)
Purification:	The antibody was purified by immunogen affinity chromatography.

Target Details

Target:	CBL
Alternative Name:	C-CBL (CBL Products)

Target Details

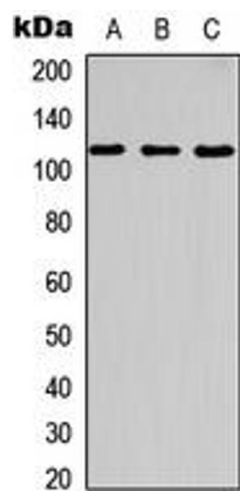
Background:	CBL2, RNF55, E3 ubiquitin-protein ligase CBL, Casitas B-lineage lymphoma proto-oncogene, Proto-oncogene c-Cbl, RING finger protein 55, Signal transduction protein CBL
Gene ID:	867, 12402
UniProt:	P22681 , P22682
Pathways:	TCR Signaling , Interferon-gamma Pathway , EGFR Signaling Pathway , EGFR Downregulation , VEGFR1 Specific Signals

Application Details

Application Notes:	WB (1:500 - 1:1000), IH (1:100 - 1:200), IF/IC (1:100 - 1:500)
Restrictions:	For Research Use only

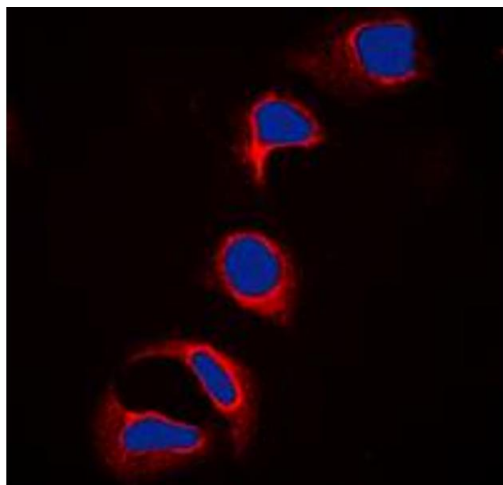
Handling

Format:	Liquid
Buffer:	Liquid in 0.42 % Potassium phosphate, 0.87 % Sodium chloride, pH 7.3, 30 % glycerol, and 0.01 % sodium azide.
Preservative:	Sodium azide
Precaution of Use:	This product contains Sodium azide: a POISONOUS AND HAZARDOUS SUBSTANCE which should be handled by trained staff only.
Storage:	-20 °C
Storage Comment:	Shipped at 4°C. Upon delivery aliquot and store at -20°C for one year. Avoid freeze/thaw cycles.
Expiry Date:	12 months



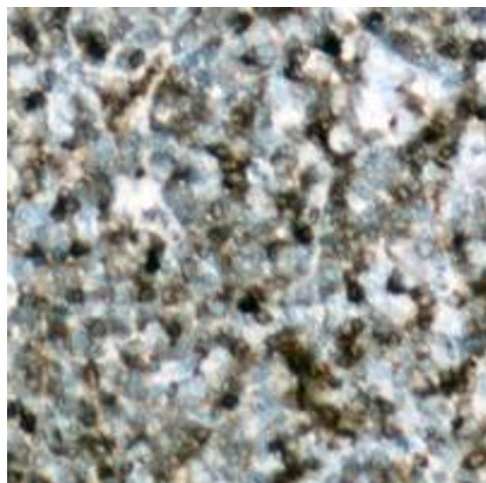
Western Blotting

Image 1. Western blot analysis of c-CBL (pY700) expression in HT29 UV-treated (A), NIH3T3 (B), rat kidney (C) whole cell lysates.



Immunofluorescence

Image 2. Immunofluorescent analysis of c-CBL (pY700) staining in HeLa cells. Formalin-fixed cells were permeabilized with 0.1% Triton X-100 in TBS for 5-10 minutes and blocked with 3% BSA-PBS for 30 minutes at room temperature. Cells were probed with the primary antibody in 3% BSA-PBS and incubated overnight at 4 °C in a humidified chamber. Cells were washed with PBST and incubated with a DyLight 594-conjugated secondary antibody (red) in PBS at room temperature in the dark. DAPI was used to stain the cell nuclei (blue).



Immunohistochemistry

Image 3. Immunohistochemical analysis of c-CBL (pY700) staining in human lymph node formalin fixed paraffin embedded tissue section. The section was pre-treated using heat mediated antigen retrieval with sodium citrate buffer (pH 6.0). The section was then incubated with the antibody at room temperature and detected using an HRP conjugated compact polymer system. DAB was used as the chromogen. The section was then counterstained with haematoxylin and mounted with DPX.