



Datasheet for ABIN7301548  
**anti-CDC25C antibody (pSer216)**



[Go to Product page](#)

3 Images

### Overview

Quantity:	100 µL
Target:	CDC25C
Binding Specificity:	pSer216
Reactivity:	Human, Mouse, Rat
Host:	Rabbit
Clonality:	Polyclonal
Conjugate:	This CDC25C antibody is un-conjugated
Application:	Western Blotting (WB), Immunohistochemistry (IHC), Immunofluorescence (IF), Immunochromatography (IC)

### Product Details

Immunogen:	KLH-conjugated synthetic peptide encompassing a sequence within the center region of human CDC25C (pS216).
Specificity:	Recognizes endogenous levels of CDC25C (pS216) protein.
Characteristics:	Rabbit polyclonal antibody to CDC25C (pS216)
Purification:	The antibody was purified by immunogen affinity chromatography.

### Target Details

Target:	CDC25C
Alternative Name:	CDC25C ( <a href="#">CDC25C Products</a> )

## Target Details

Background:	M-phase inducer phosphatase 3, Dual specificity phosphatase Cdc25C
Gene ID:	995, 12532
UniProt:	<a href="#">P30307</a> , <a href="#">P48967</a>
Pathways:	<a href="#">Cell Division Cycle, M Phase</a>

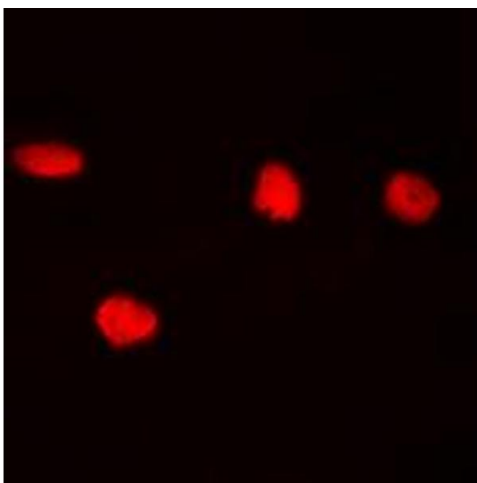
## Application Details

Application Notes:	WB (1:500 - 1:1000), IH (1:100 - 1:200), IF/IC (1:100 - 1:500)
Restrictions:	For Research Use only

## Handling

Format:	Liquid
Buffer:	Liquid in 0.42 % Potassium phosphate, 0.87 % Sodium chloride, pH 7.3, 30 % glycerol, and 0.01 % sodium azide.
Preservative:	Sodium azide
Precaution of Use:	This product contains Sodium azide: a POISONOUS AND HAZARDOUS SUBSTANCE which should be handled by trained staff only.
Storage:	-20 °C
Storage Comment:	Shipped at 4°C. Upon delivery aliquot and store at -20°C for one year. Avoid freeze/thaw cycles.
Expiry Date:	12 months

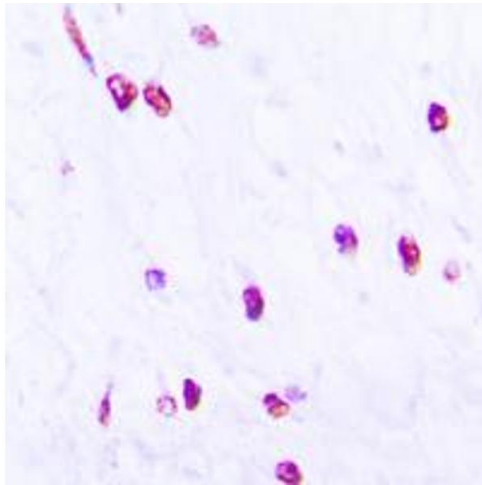
## Images



### Immunofluorescence

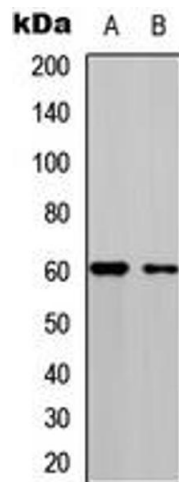
**Image 1.** Immunofluorescent analysis of CDC25C (pS216) staining in HeLa cells. Formalin-fixed cells were permeabilized with 0.1% Triton X-100 in TBS for 5-10 minutes and blocked with 3% BSA-PBS for 30 minutes at room temperature. Cells were probed with the primary antibody in 3% BSA-PBS and incubated overnight at 4 °C in a humidified chamber. Cells were washed with PBST and incubated with a DyLight 594-conjugated secondary

antibody (red) in PBS at room temperature in the dark. DAPI was used to stain the cell nuclei (blue).



### Immunohistochemistry

**Image 2.** Immunohistochemical analysis of CDC25C (pS216) staining in human lung cancer formalin fixed paraffin embedded tissue section. The section was pre-treated using heat mediated antigen retrieval with sodium citrate buffer (pH 6.0). The section was then incubated with the antibody at room temperature and detected using an HRP conjugad compact polymer system. DAB was used as the chromogen. The section was then counterstained with haematoxylin and mounted with DPX.



### Western Blotting

**Image 3.** Western blot analysis of CDC25C (pS216) expression in HEK293T (A), A549 (B) whole cell lysates.