

Datasheet for ABIN7301560  
**anti-CEBPB antibody (pSer235)**

## 3 Images

[Go to Product page](#)

## Overview

Quantity:	100 µL
Target:	CEBPB
Binding Specificity:	pSer235
Reactivity:	Human, Mouse, Rat, Cow, Pig
Host:	Rabbit
Clonality:	Polyclonal
Conjugate:	This CEBPB antibody is un-conjugated
Application:	Western Blotting (WB), Immunohistochemistry (IHC), Immunofluorescence (IF), Immunochromatography (IC)

## Product Details

Immunogen:	KLH-conjugated synthetic peptide encompassing a sequence within the center region of human C/EBP beta (pT235).
Specificity:	Recognizes endogenous levels of C/EBP beta (pT235) protein.
Characteristics:	Rabbit polyclonal antibody to C/EBP beta (pT235)
Purification:	The antibody was purified by immunogen affinity chromatography.

## Target Details

Target:	CEBPB
Alternative Name:	C/EBP beta ( <a href="#">CEBPB Products</a> )

## Target Details

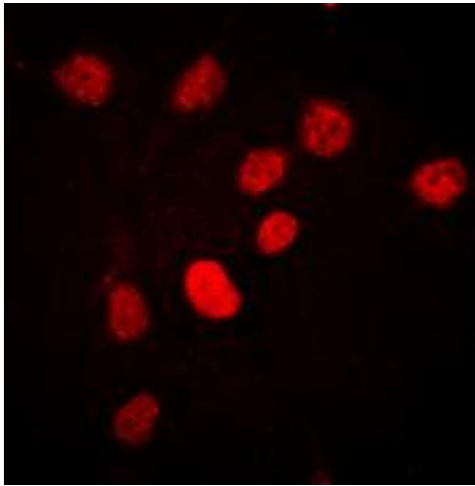
Background:	TCF5, CCAAT/enhancer-binding protein beta, C/EBP beta, Liver activator protein, LAP, Liver-enriched inhibitory protein, LIP, Nuclear factor NF-IL6, Transcription factor 5, TCF-5
Gene ID:	1051, 12608, 24253
UniProt:	<a href="#">P17676</a> , <a href="#">P28033</a> , <a href="#">P21272</a>
Pathways:	<a href="#">Interferon-gamma Pathway</a> , <a href="#">Autophagy</a> , <a href="#">Brown Fat Cell Differentiation</a>

## Application Details

Application Notes:	WB (1:500 - 1:1000), IH (1:100 - 1:200), IF/IC (1:100 - 1:500)
Restrictions:	For Research Use only

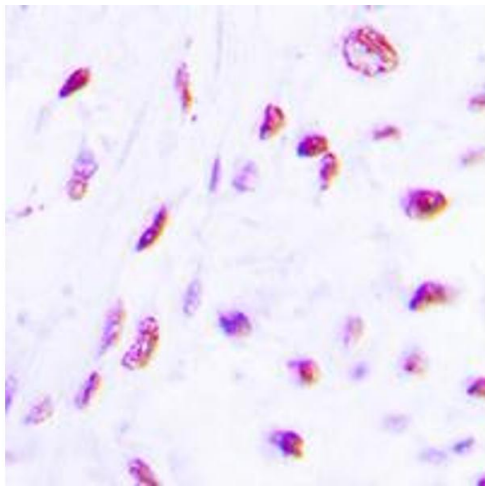
## Handling

Format:	Liquid
Buffer:	Liquid in 0.42 % Potassium phosphate, 0.87 % Sodium chloride, pH 7.3, 30 % glycerol, and 0.01 % sodium azide.
Preservative:	Sodium azide
Precaution of Use:	This product contains Sodium azide: a POISONOUS AND HAZARDOUS SUBSTANCE which should be handled by trained staff only.
Storage:	-20 °C
Storage Comment:	Shipped at 4°C. Upon delivery aliquot and store at -20°C for one year. Avoid freeze/thaw cycles.
Expiry Date:	12 months



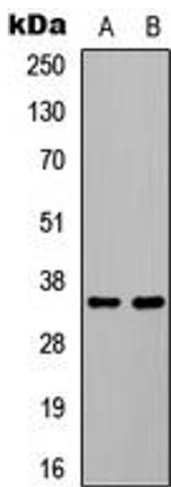
### Immunofluorescence

**Image 1.** Immunofluorescent analysis of C/EBP beta (pT235) staining in HEK293T cells. Formalin-fixed cells were permeabilized with 0.1% Triton X-100 in TBS for 5-10 minutes and blocked with 3% BSA-PBS for 30 minutes at room temperature. Cells were probed with the primary antibody in 3% BSA-PBS and incubated overnight at 4 °C in a humidified chamber. Cells were washed with PBST and incubated with a DyLight 594-conjugated secondary antibody (red) in PBS at room temperature in the dark. DAPI was used to stain the cell nuclei (blue).



### Immunohistochemistry

**Image 2.** Immunohistochemical analysis of C/EBP beta (pT235) staining in human lung cancer formalin fixed paraffin embedded tissue section. The section was pre-treated using heat mediated antigen retrieval with sodium citrate buffer (pH 6.0). The section was then incubated with the antibody at room temperature and detected using an HRP conjugated compact polymer system. DAB was used as the chromogen. The section was then counterstained with haematoxylin and mounted with DPX.



### Western Blotting

**Image 3.** Western blot analysis of C/EBP beta (pT235) expression in HEK293T EGF-treated (A), COLO205 EGF-treated (B) whole cell lysates.