



[Go to Product page](#)

Datasheet for ABIN7301564

anti-CLASP1 antibody (C-Term)

2 Images

Overview

Quantity:	100 µL
Target:	CLASP1
Binding Specificity:	C-Term
Reactivity:	Human, Mouse, Rat
Host:	Rabbit
Clonality:	Polyclonal
Conjugate:	This CLASP1 antibody is un-conjugated
Application:	Western Blotting (WB), Immunohistochemistry (IHC)

Product Details

Immunogen:	KLH-conjugated synthetic peptide encompassing a sequence within the C-term region of human CLASP1.
Specificity:	Recognizes endogenous levels of CLASP1 protein.
Characteristics:	Rabbit polyclonal antibody to CLASP1
Purification:	The antibody was purified by immunogen affinity chromatography.

Target Details

Target:	CLASP1
Alternative Name:	CLASP1 (CLASP1 Products)
Background:	KIAA0622, MAST1, CLIP-associating protein 1, Cytoplasmic linker-associated protein 1, Multiple

Target Details

asters homolog 1, Protein Orbit homolog 1, hOrbit1

Gene ID: 23332, 76707

UniProt: [Q7Z460](#), [Q80TV8](#)

Pathways: [Microtubule Dynamics](#), [M Phase](#), [Maintenance of Protein Location](#)

Application Details

Application Notes: WB (1:500 - 1:1000), IH (1:100 - 1:200)

Restrictions: For Research Use only

Handling

Format: Liquid

Buffer: Liquid in 0.42 % Potassium phosphate, 0.87 % Sodium chloride, pH 7.3, 30 % glycerol, and 0.01 % sodium azide.

Preservative: Sodium azide

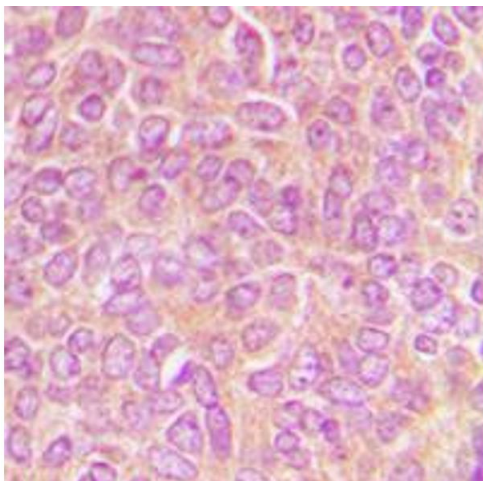
Precaution of Use: This product contains Sodium azide: a POISONOUS AND HAZARDOUS SUBSTANCE which should be handled by trained staff only.

Storage: -20 °C

Storage Comment: Shipped at 4°C. Upon delivery aliquot and store at -20°C for one year. Avoid freeze/thaw cycles.

Expiry Date: 12 months

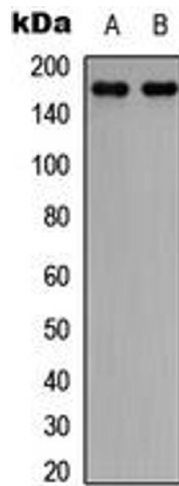
Images



Immunohistochemistry

Image 1. Immunohistochemical analysis of CLASP1 staining in human breast cancer formalin fixed paraffin embedded tissue section. The section was pre-treated using heat mediated antigen retrieval with sodium citrate buffer (pH 6.0). The section was then incubated with the antibody at room temperature and detected using an HRP conjugated compact polymer system. DAB was used as the chromogen. The section was then counterstained with

haematoxylin and mounted with DPX.



Western Blotting

Image 2. Western blot analysis of CLASP1 expression in SHSY5Y (A), NIH3T3 (B) whole cell lysates.