



[Go to Product page](#)

Datasheet for ABIN7301596
anti-DUSP6 antibody (Center)

3 Images

Overview

Quantity:	100 µL
Target:	DUSP6
Binding Specificity:	Center
Reactivity:	Human, Mouse, Rat, Pig, Dog, Cow
Host:	Rabbit
Clonality:	Polyclonal
Conjugate:	This DUSP6 antibody is un-conjugated
Application:	Western Blotting (WB), Immunohistochemistry (IHC), Immunofluorescence (IF), Immunochromatography (IC)

Product Details

Immunogen:	KLH-conjugated synthetic peptide encompassing a sequence within the center region of human DUSP6.
Specificity:	Recognizes endogenous levels of DUSP6 protein.
Characteristics:	Rabbit polyclonal antibody to DUSP6
Purification:	The antibody was purified by immunogen affinity chromatography.

Target Details

Target:	DUSP6
Alternative Name:	DUSP6 (DUSP6 Products)

Target Details

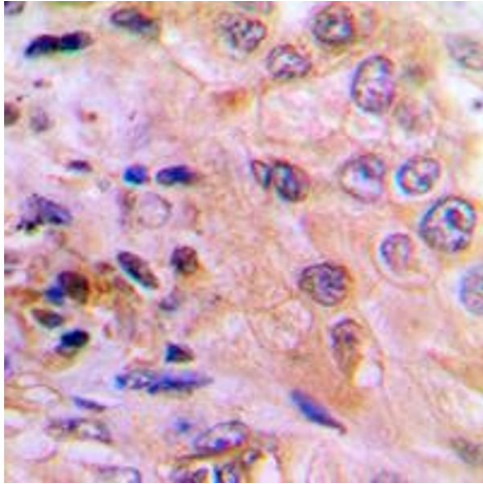
Background:	MKP3, PYST1, Dual specificity protein phosphatase 6, Dual specificity protein phosphatase PYST1, Mitogen-activated protein kinase phosphatase 3, MAP kinase phosphatase 3, MKP-3
Gene ID:	1848, 67603, 116663
UniProt:	Q16828 , Q9DBB1 , Q64346
Pathways:	Neurotrophin Signaling Pathway , Activation of Innate immune Response , Toll-Like Receptors Cascades

Application Details

Application Notes:	WB (1:500 - 1:1000), IH (1:100 - 1:200), IF/IC (1:100 - 1:500)
Restrictions:	For Research Use only

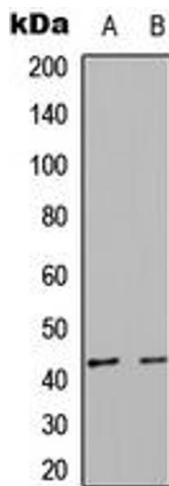
Handling

Format:	Liquid
Buffer:	Liquid in 0.42 % Potassium phosphate, 0.87 % Sodium chloride, pH 7.3, 30 % glycerol, and 0.01 % sodium azide.
Preservative:	Sodium azide
Precaution of Use:	This product contains Sodium azide: a POISONOUS AND HAZARDOUS SUBSTANCE which should be handled by trained staff only.
Storage:	-20 °C
Storage Comment:	Shipped at 4°C. Upon delivery aliquot and store at -20°C for one year. Avoid freeze/thaw cycles.
Expiry Date:	12 months



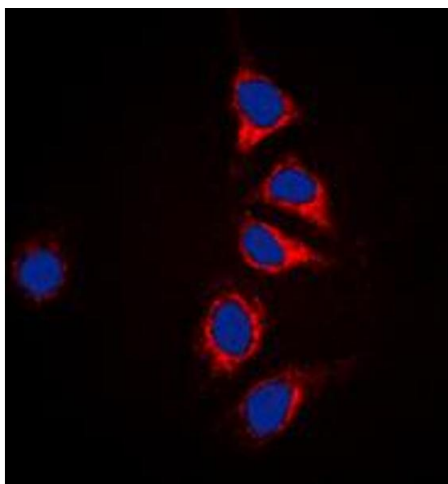
Immunohistochemistry

Image 1. Immunohistochemical analysis of DUSP6 staining in human lung cancer formalin fixed paraffin embedded tissue section. The section was pre-treated using heat mediated antigen retrieval with sodium citrate buffer (pH 6.0). The section was then incubated with the antibody at room temperature and detected using an HRP conjugated compact polymer system. DAB was used as the chromogen. The section was then counterstained with haematoxylin and mounted with DPX.



Western Blotting

Image 2. Western blot analysis of DUSP6 expression in HepG2 (A), NIH3T3 (B) whole cell lysates.



Immunofluorescence

Image 3. Immunofluorescent analysis of DUSP6 staining in HepG2 cells. Formalin-fixed cells were permeabilized with 0.1% Triton X-100 in TBS for 5-10 minutes and blocked with 3% BSA-PBS for 30 minutes at room temperature. Cells were probed with the primary antibody in 3% BSA-PBS and incubated overnight at 4 °C in a humidified chamber. Cells were washed with PBST and incubated with a DyLight 594-conjugated secondary antibody (red) in PBS at room temperature in the dark. DAPI was used to stain the cell nuclei (blue).