



[Go to Product page](#)

Datasheet for ABIN730258

## anti-Endothelin 1 antibody (AA 53-73)

1 Image

1 Publication

### Overview

Quantity:	100 µL
Target:	Endothelin 1 (EDN1)
Binding Specificity:	AA 53-73
Reactivity:	Human, Rat, Pig, Mouse
Host:	Rabbit
Clonality:	Polyclonal
Conjugate:	This Endothelin 1 antibody is un-conjugated
Application:	Western Blotting (WB), ELISA, Immunofluorescence (Paraffin-embedded Sections) (IF (p)), Immunohistochemistry (Paraffin-embedded Sections) (IHC (p)), Immunofluorescence (Cultured Cells) (IF (cc)), Immunohistochemistry (Frozen Sections) (IHC (fro))

### Product Details

Immunogen:	KLH conjugated synthetic peptide derived from human human Endothelin-1
Isotype:	IgG
Cross-Reactivity:	Human, Mouse, Pig, Rat
Predicted Reactivity:	Dog,Cow,Sheep,Horse,Guinea Pig
Purification:	Purified by Protein A.

### Target Details

Target:	Endothelin 1 (EDN1)
---------	---------------------

## Target Details

---

Alternative Name: Endothelin-1 ([EDN1 Products](#))

---

Background: Synonyms: Endothelin-1, EDN 1, EDN1, EDN1 protein, Endothelin1, ET 1,ET1,  
Background: Endothelins (ET) show potent constrictor activity in vascular and non-vascular smooth muscle. This family of 21-amino acid peptides exists in at least three isoforms - ET-1, ET-2, and ET-3, and is produced in endothelial and epithelial cells. ET's can mediate biological effects in cells and tissues, and have been shown to bind to an ET receptor in the lung, kidney, heart, and liver. Endothelin 1 is expressed in lung, placental stem villi vessels and in cultured placental vascular smooth muscle cells.

---

Gene ID: 1906

---

Pathways: [Hormone Transport](#), [Negative Regulation of Hormone Secretion](#), [Regulation of Systemic Arterial Blood Pressure by Hormones](#), [cAMP Metabolic Process](#), [Regulation of Muscle Cell Differentiation](#), [Regulation of G-Protein Coupled Receptor Protein Signaling](#), [Regulation of Cell Size](#)

---

## Application Details

---

Application Notes: WB 1:300-5000  
ELISA 1:500-1000  
IHC-P 1:200-400  
IHC-F 1:100-500  
IF(IHC-P) 1:50-200  
IF(IHC-F) 1:50-200  
IF(ICC) 1:50-200

---

Restrictions: For Research Use only

---

## Handling

---

Format: Liquid

---

Concentration: 1 µg/µL

---

Buffer: 0.01M TBS( pH 7.4) with 1 % BSA, 0.02 % Proclin300 and 50 % Glycerol.

---

Preservative: ProClin

---

Precaution of Use: This product contains ProClin: a POISONOUS AND HAZARDOUS SUBSTANCE, which should be handled by trained staff only.

---

Storage: 4 °C,-20 °C

---

## Handling

---

Storage Comment: Shipped at 4°C. Store at -20°C for one year. Avoid repeated freeze/thaw cycles.

---

Expiry Date: 12 months

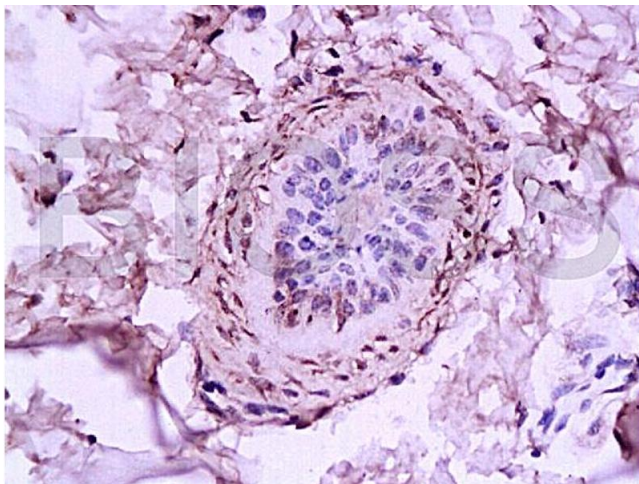
## Publications

---

Product cited in: Hu, Yan, Wang, Meng, Pan: "Comparative analysis of preservation method and intermittent perfusion volume on the expression of endothelial and inflammatory markers by coronal artery and myocardium in porcine donor hearts." in: **ASAIO journal (American Society for Artificial Internal Organs : 1992)**, Vol. 60, Issue 6, pp. 681-7, (2014) ([PubMed](#)).

## Images

---



### Immunohistochemistry

Image 1.