

Datasheet for ABIN7302718

anti-PTEN antibody (C-Term, pSer380, pThr382, pThr383)[Go to Product page](#)**3** Images

Overview

Quantity:	100 µL
Target:	PTEN
Binding Specificity:	C-Term, pSer380, pThr382, pThr383
Reactivity:	Human, Mouse, Rat, Dog, Zebrafish (Danio rerio)
Host:	Rabbit
Clonality:	Polyclonal
Application:	Western Blotting (WB), Immunohistochemistry (IHC), Immunofluorescence (IF), Immunoprecipitation (IP), Immunochromatography (IC)

Product Details

Immunogen:	KLH-conjugated synthetic peptide encompassing a sequence within the C-term region of human PTEN.
Specificity:	Recognizes endogenous levels of PTEN (pS380/T382/T383) protein.
Characteristics:	Rabbit polyclonal antibody to PTEN (pS380/T382/T383)
Purification:	The antibody was purified by affinity chromatography.

Target Details

Target:	PTEN
Alternative Name:	PTEN (PTEN Products)
Background:	MMAC1, TEP1, Phosphatidylinositol 3,4,5-trisphosphate 3-phosphatase and dual-specificity protein phosphatase PTEN, Mutated in multiple advanced cancers 1, Phosphatase and tensin

Target Details

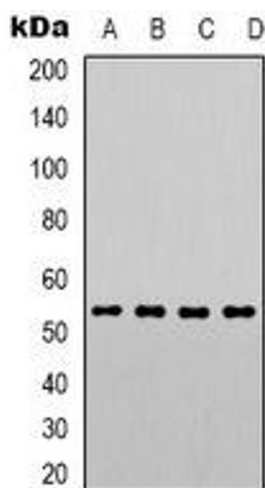
	homolog
Gene ID:	5728, 19211
UniProt:	P60484 , O08586
Pathways:	TCR Signaling , Fc-epsilon Receptor Signaling Pathway , EGFR Signaling Pathway , Inositol Metabolic Process , Synaptic Membrane , Regulation of Cell Size , Autophagy , Platelet-derived growth Factor Receptor Signaling , Signaling of Hepatocyte Growth Factor Receptor , BCR Signaling

Application Details

Application Notes:	WB (1:500 - 1:1000), IH (1:100 - 1:200), IF/IC (1:100 - 1:500), IP (1:10 - 1:100)
Restrictions:	For Research Use only

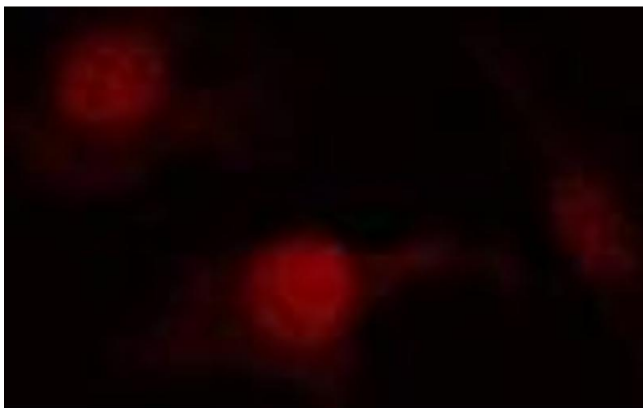
Handling

Format:	Liquid
Buffer:	Liquid in PBS, pH 7.3, 0.2 % BSA, and 0.02 % sodium azide.
Preservative:	Sodium azide
Precaution of Use:	This product contains Sodium azide: a POISONOUS AND HAZARDOUS SUBSTANCE which should be handled by trained staff only.
Storage:	-20 °C
Storage Comment:	Shipped at 4°C. Upon delivery aliquot and store at -20°C for one year. Avoid freeze/thaw cycles.
Expiry Date:	12 months



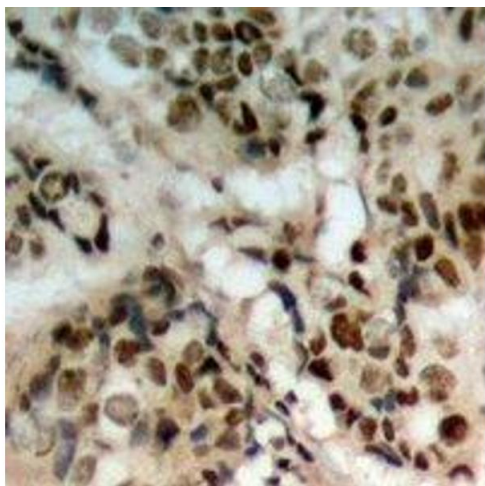
Western Blotting

Image 1. Western blot analysis of PTEN (pS380/T382/T383) expression in Hela (A), A431 (B), MCF7 (C), RAW264.7 (D) whole cell lysates.



Immunofluorescence

Image 2. Immunofluorescent analysis of PTEN (pS380/T382/T383) staining in Hela cells. Formalin-fixed cells were permeabilized with 0.1% Triton X-100 in TBS for 5-10 minutes and blocked with 3% BSA-PBS for 30 minutes at room temperature. Cells were probed with the



Immunohistochemistry

Image 3. Immunohistochemical analysis of PTEN (pS380/T382/T383) staining in human prostate cancer formalin fixed paraffin embedded tissue section. The section was pre-treated using heat mediated antigen retrieval with sodium citrate buffer (pH 6.0). The section wa