

Datasheet for ABIN7302734

anti-PHF1 antibody**2** Images[Go to Product page](#)

Overview

Quantity:	100 µL
Target:	PHF1
Reactivity:	Human, Dog, Rabbit, Cow
Host:	Rabbit
Clonality:	Polyclonal
Conjugate:	This PHF1 antibody is un-conjugated
Application:	Western Blotting (WB), Immunohistochemistry (IHC)

Product Details

Immunogen:	KLH-conjugated synthetic peptide encompassing a sequence within the center region of human PHF1.
Specificity:	Recognizes endogenous levels of PHF1 protein.
Characteristics:	Rabbit polyclonal antibody to PHF1
Purification:	The antibody was purified by affinity chromatography.

Target Details

Target:	PHF1
Alternative Name:	PHF1 (PHF1 Products)
Background:	PCL1, PHD finger protein 1, Protein PHF1, hPHF1, Polycomb-like protein 1, hPCI1
Gene ID:	5252

Target Details

UniProt: [O43189](#)

Application Details

Application Notes: WB (1:500 - 1:1000), IH (1:100 - 1:200)

Restrictions: For Research Use only

Handling

Format: Liquid

Buffer: Liquid in PBS, pH 7.3, 0.2 % BSA, and 0.02 % sodium azide.

Preservative: Sodium azide

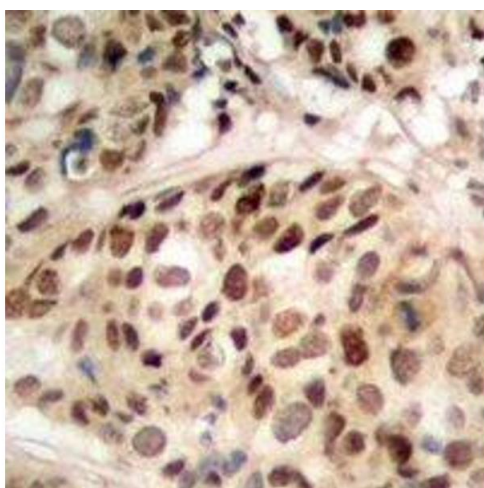
Precaution of Use: This product contains Sodium azide: a POISONOUS AND HAZARDOUS SUBSTANCE which should be handled by trained staff only.

Storage: -20 °C

Storage Comment: Shipped at 4°C. Upon delivery aliquot and store at -20°C for one year. Avoid freeze/thaw cycles.

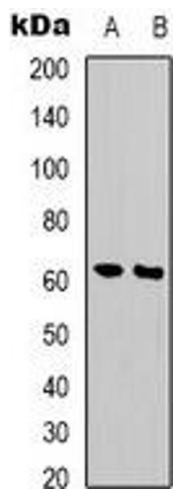
Expiry Date: 12 months

Images



Immunohistochemistry

Image 1. Immunohistochemical analysis of PHF1 staining in human prostate cancer formalin fixed paraffin embedded tissue section. The section was pre-treated using heat mediated antigen retrieval with sodium citrate buffer (pH 6.0). The section was then incubated w



Western Blotting

Image 2. Western blot analysis of PHF1 expression in MCF7 (A), Jurkat (B) whole cell lysates.