



[Go to Product page](#)

Datasheet for ABIN7302740

anti-FER antibody

2 Images

Overview

Quantity:	100 µL
Target:	FER
Reactivity:	Human, Mouse, Rat, Dog, Cow, Pig, Monkey
Host:	Rabbit
Clonality:	Polyclonal
Conjugate:	This FER antibody is un-conjugated
Application:	Western Blotting (WB), Immunohistochemistry (IHC)

Product Details

Immunogen:	KLH-conjugated synthetic peptide encompassing a sequence within the center region of human c-FER.
Specificity:	Recognizes endogenous levels of c-FER protein.
Characteristics:	Rabbit polyclonal antibody to c-FER
Purification:	The antibody was purified by affinity chromatography.

Target Details

Target:	FER
Alternative Name:	C-FER (FER Products)
Background:	FPS, Tyrosine-protein kinase Fes/Fps, Feline sarcoma/Fujinami avian sarcoma oncogene homolog, Proto-oncogene c-Fes, Proto-oncogene c-Fps, p93c-fes

Target Details

Gene ID: 2242, 14159

UniProt: [P07332](#), [P16879](#)

Application Details

Application Notes: WB (1:500 - 1:1000), IH (1:100 - 1:200)

Restrictions: For Research Use only

Handling

Format: Liquid

Buffer: Liquid in PBS, pH 7.3, 0.2 % BSA, and 0.02 % sodium azide.

Preservative: Sodium azide

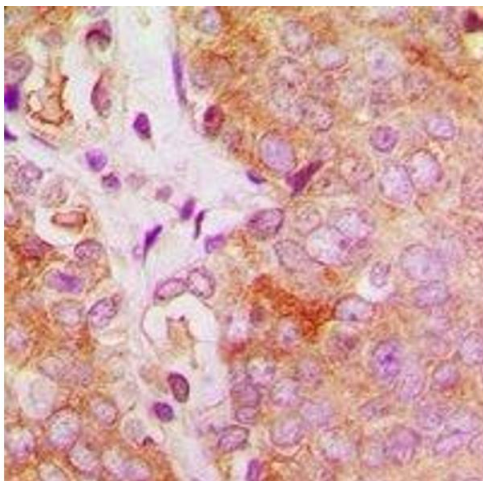
Precaution of Use: This product contains Sodium azide: a POISONOUS AND HAZARDOUS SUBSTANCE which should be handled by trained staff only.

Storage: -20 °C

Storage Comment: Shipped at 4°C. Upon delivery aliquot and store at -20°C for one year. Avoid freeze/thaw cycles.

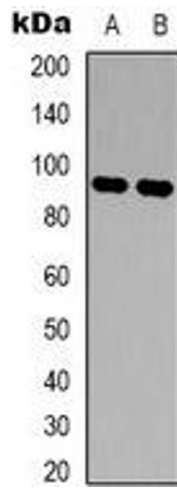
Expiry Date: 12 months

Images



Immunohistochemistry

Image 1. Immunohistochemical analysis of c-FER staining in human breast cancer formalin fixed paraffin embedded tissue section. The section was pre-treated using heat mediated antigen retrieval with sodium citrate buffer (pH 6.0). The section was then incubated wi



Western Blotting

Image 2. Western blot analysis of c-FER expression in TF1 (A), A549 (B) whole cell lysates.