



[Go to Product page](#)

Datasheet for ABIN7302752  
**anti-Coronin 1a antibody**

2 Images

Overview

Quantity:	100 µL
Target:	Coronin 1a (CORO1A)
Reactivity:	Human, Mouse, Cow, Pig, Monkey
Host:	Rabbit
Clonality:	Polyclonal
Conjugate:	This Coronin 1a antibody is un-conjugated
Application:	Western Blotting (WB), Immunohistochemistry (IHC), Immunoprecipitation (IP)

Product Details

Immunogen:	KLH-conjugated synthetic peptide encompassing a sequence within the center region of human Clipin A.
Specificity:	Recognizes endogenous levels of Clipin A protein.
Characteristics:	Rabbit polyclonal antibody to Clipin A
Purification:	The antibody was purified by affinity chromatography.

Target Details

Target:	Coronin 1a (CORO1A)
Alternative Name:	Clipin A ( <a href="#">CORO1A Products</a> )
Background:	CORO1, Coronin-1A, Coronin-like protein A, Clipin-A, Coronin-like protein p57, Tryptophan aspartate-containing coat protein, TACO

## Target Details

Gene ID: 11151, 12721

UniProt: [P31146](#), [O89053](#)

Pathways: [Regulation of Actin Filament Polymerization](#)

## Application Details

Application Notes: WB (1:500 - 1:1000), IH (1:100 - 1:200), IP (1:10 - 1:100)

Restrictions: For Research Use only

## Handling

Format: Liquid

Buffer: Liquid in PBS, pH 7.3, 0.2 % BSA, and 0.02 % sodium azide.

Preservative: Sodium azide

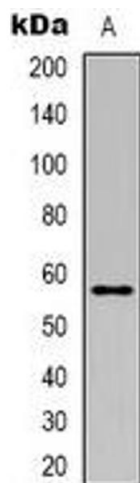
Precaution of Use: This product contains Sodium azide: a POISONOUS AND HAZARDOUS SUBSTANCE which should be handled by trained staff only.

Storage: -20 °C

Storage Comment: Shipped at 4°C. Upon delivery aliquot and store at -20°C for one year. Avoid freeze/thaw cycles.

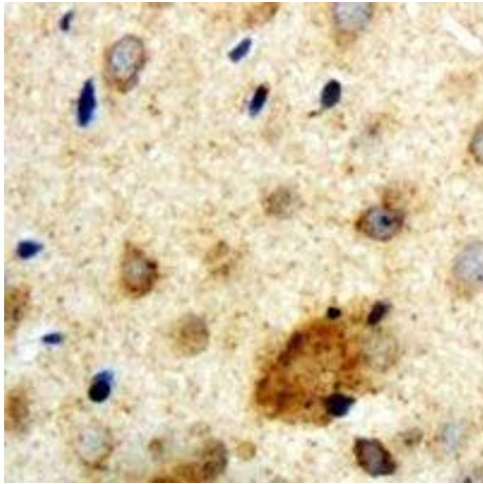
Expiry Date: 12 months

## Images



### Western Blotting

**Image 1.** Western blot analysis of Clipin A expression in Jurkat (A) whole cell lysates.



### Immunohistochemistry

**Image 2.** Immunohistochemical analysis of Clipin A staining in human brain formalin fixed paraffin embedded tissue section. The section was pre-treated using heat mediated antigen retrieval with sodium citrate buffer (pH 6.0). The section was then incubated with th