

Datasheet for ABIN7302770
anti-MOBKL2C antibody[Go to Product page](#)

2 Images

Overview

Quantity:	100 µL
Target:	MOBKL2C
Reactivity:	Human, Mouse, Rat, Cow
Host:	Rabbit
Clonality:	Polyclonal
Conjugate:	This MOBKL2C antibody is un-conjugated
Application:	Western Blotting (WB), Immunohistochemistry (IHC)

Product Details

Immunogen:	KLH-conjugated synthetic peptide encompassing a sequence within the center region of human MOB3C.
Specificity:	Recognizes endogenous levels of MOB3C protein.
Characteristics:	Rabbit polyclonal antibody to MOB3C
Purification:	The antibody was purified by affinity chromatography.

Target Details

Target:	MOBKL2C
Alternative Name:	MOB3C (MOBKL2C Products)
Background:	MOBKL2C, MOB kinase activator 3C, Mob1 homolog 2C, Mps one binder kinase activator-like 2C

Target Details

Gene ID: 148932, 100465

UniProt: [Q70IA8](#), [Q8BJG4](#)

Application Details

Application Notes: WB (1:500 - 1:1000), IH (1:100 - 1:200)

Restrictions: For Research Use only

Handling

Format: Liquid

Buffer: Liquid in PBS, pH 7.3, 0.2 % BSA, and 0.02 % sodium azide.

Preservative: Sodium azide

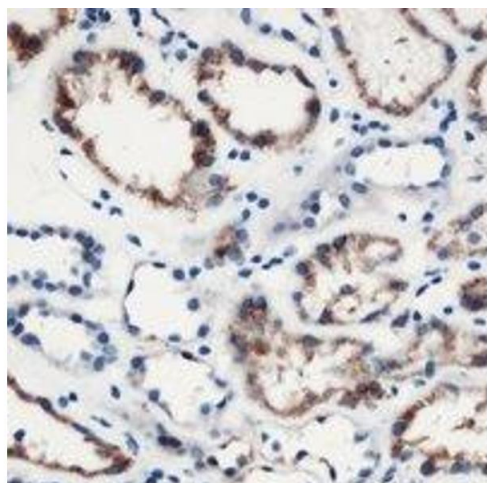
Precaution of Use: This product contains Sodium azide: a POISONOUS AND HAZARDOUS SUBSTANCE which should be handled by trained staff only.

Storage: -20 °C

Storage Comment: Shipped at 4°C. Upon delivery aliquot and store at -20°C for one year. Avoid freeze/thaw cycles.

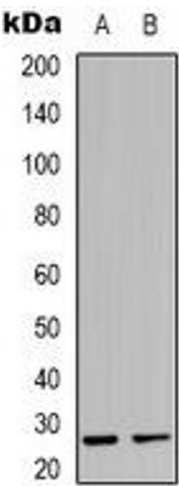
Expiry Date: 12 months

Images



Immunohistochemistry

Image 1. Immunohistochemical analysis of MOB3C staining in human kidney formalin fixed paraffin embedded tissue section. The section was pre-treated using heat mediated antigen retrieval with sodium citrate buffer (pH 6.0). The section was then incubated with the



Western Blotting

Image 2. Western blot analysis of MOB3C expression in K562 (A), mouse heart (B) whole cell lysates.