

Datasheet for ABIN7302790

**anti-PSMD11 antibody****2** Images[Go to Product page](#)

## Overview

Quantity:	100 µL
Target:	PSMD11
Reactivity:	Human, Mouse, Rat, Cow, Monkey
Host:	Rabbit
Clonality:	Polyclonal
Conjugate:	This PSMD11 antibody is un-conjugated
Application:	Western Blotting (WB), Immunohistochemistry (IHC)

## Product Details

Immunogen:	KLH-conjugated synthetic peptide encompassing a sequence within the center region of human PSMD11.
Specificity:	Recognizes endogenous levels of PSMD11 protein.
Characteristics:	Rabbit polyclonal antibody to PSMD11
Purification:	The antibody was purified by affinity chromatography.

## Target Details

Target:	PSMD11
Alternative Name:	PSMD11 ( <a href="#">PSMD11 Products</a> )
Background:	26S proteasome non-ATPase regulatory subunit 11, 26S proteasome regulatory subunit RPN6, 26S proteasome regulatory subunit S9, 26S proteasome regulatory subunit p44.5

## Target Details

Gene ID:	5717, 69077
UniProt:	<a href="#">O00231</a> , <a href="#">Q8BG32</a> , <a href="#">F1LMZ8</a>
Pathways:	<a href="#">Mitotic G1-G1/S Phases</a> , <a href="#">DNA Replication</a> , <a href="#">Synthesis of DNA</a> , <a href="#">Ubiquitin Proteasome Pathway</a>

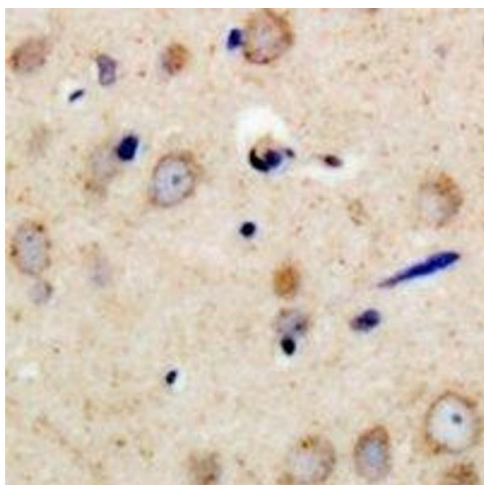
## Application Details

Application Notes:	WB (1:500 - 1:1000), IH (1:100 - 1:200)
Restrictions:	For Research Use only

## Handling

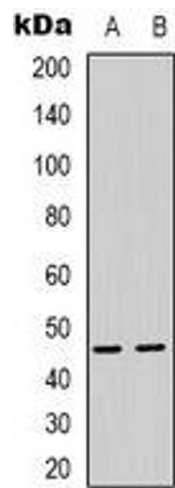
Format:	Liquid
Buffer:	Liquid in PBS, pH 7.3, 0.2 % BSA, and 0.02 % sodium azide.
Preservative:	Sodium azide
Precaution of Use:	This product contains Sodium azide: a POISONOUS AND HAZARDOUS SUBSTANCE which should be handled by trained staff only.
Storage:	-20 °C
Storage Comment:	Shipped at 4°C. Upon delivery aliquot and store at -20°C for one year. Avoid freeze/thaw cycles.
Expiry Date:	12 months

## Images



### Immunohistochemistry

**Image 1.** Immunohistochemical analysis of PSMD11 staining in human brain formalin fixed paraffin embedded tissue section. The section was pre-treated using heat mediated antigen retrieval with sodium citrate buffer (pH 6.0). The section was then incubated with the



Western Blotting

**Image 2.** Western blot analysis of PSMD11 expression in HeLa (A), HEK293T (B) whole cell lysates.