

Datasheet for ABIN7302800

**anti-RPS13 antibody****2** Images[Go to Product page](#)

## Overview

Quantity:	100 µL
Target:	RPS13
Reactivity:	Human, Mouse, Rat, Cow, Zebrafish (Danio rerio), Chicken, Monkey
Host:	Rabbit
Clonality:	Polyclonal
Application:	Western Blotting (WB), Immunohistochemistry (IHC)

## Product Details

Immunogen:	KLH-conjugated synthetic peptide encompassing a sequence within the center region of human RPS13.
Specificity:	Recognizes endogenous levels of RPS13 protein.
Characteristics:	Rabbit polyclonal antibody to RPS13
Purification:	The antibody was purified by affinity chromatography.

## Target Details

Target:	RPS13
Alternative Name:	RPS13 ( <a href="#">RPS13 Products</a> )
Background:	40S ribosomal protein S13
Gene ID:	6207, 102642137, 68052
UniProt:	<a href="#">P62277</a> , <a href="#">P62301</a> , <a href="#">P62278</a>

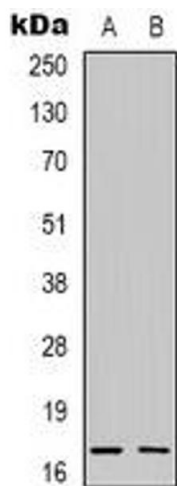
## Application Details

Application Notes:	WB (1:500 - 1:1000), IH (1:100 - 1:200)
Restrictions:	For Research Use only

## Handling

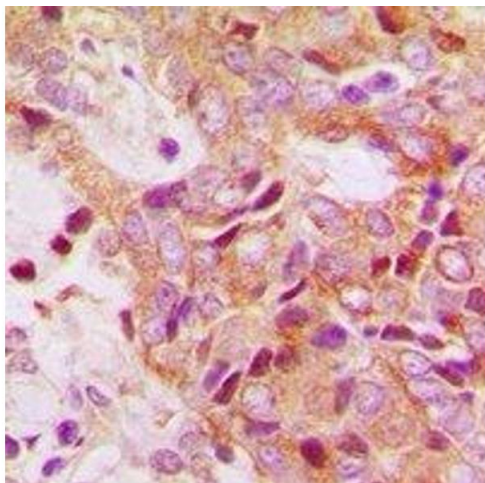
Format:	Liquid
Buffer:	Liquid in PBS, pH 7.3, 0.2 % BSA, and 0.02 % sodium azide.
Preservative:	Sodium azide
Precaution of Use:	This product contains Sodium azide: a POISONOUS AND HAZARDOUS SUBSTANCE which should be handled by trained staff only.
Storage:	-20 °C
Storage Comment:	Shipped at 4°C. Upon delivery aliquot and store at -20°C for one year. Avoid freeze/thaw cycles.
Expiry Date:	12 months

## Images



### Western Blotting

**Image 1.** Western blot analysis of RPS13 expression in THP1 (A), NIH3T3 (B) whole cell lysates.



#### Immunohistochemistry

**Image 2.** Immunohistochemical analysis of RPS13 staining in human breast cancer formalin fixed paraffin embedded tissue section. The section was pre-treated using heat mediated antigen retrieval with sodium citrate buffer (pH 6.0). The section was then incubated wi