

Datasheet for ABIN7302804  
**anti-ACSS1 antibody (C-Term)**[Go to Product page](#)

## 2 Images

## Overview

Quantity:	100 µL
Target:	ACSS1
Binding Specificity:	C-Term
Reactivity:	Human, Mouse, Rat, Cow, Monkey
Host:	Rabbit
Clonality:	Polyclonal
Conjugate:	This ACSS1 antibody is un-conjugated
Application:	Western Blotting (WB), Immunohistochemistry (IHC)

## Product Details

Immunogen:	KLH-conjugated synthetic peptide encompassing a sequence within the C-term region of human ACSS1.
Specificity:	Recognizes endogenous levels of ACSS1 protein.
Characteristics:	Rabbit polyclonal antibody to ACSS1
Purification:	The antibody was purified by affinity chromatography.

## Target Details

Target:	ACSS1
Alternative Name:	ACSS1 ( <a href="#">ACSS1 Products</a> )
Background:	ACAS2L, KIAA1846, Acetyl-coenzyme A synthetase 2-like, mitochondrial, Acetate--CoA ligase 2,

## Target Details

Acetyl-CoA synthetase 2, AceCS2, Acyl-CoA synthetase short-chain family member 1

Gene ID: 84532, 68738

UniProt: [Q9NUB1](#), [Q99NB1](#)

## Application Details

Application Notes: WB (1:500 - 1:1000), IH (1:100 - 1:200)

Restrictions: For Research Use only

## Handling

Format: Liquid

Buffer: Liquid in PBS, pH 7.3, 0.2 % BSA, and 0.02 % sodium azide.

Preservative: Sodium azide

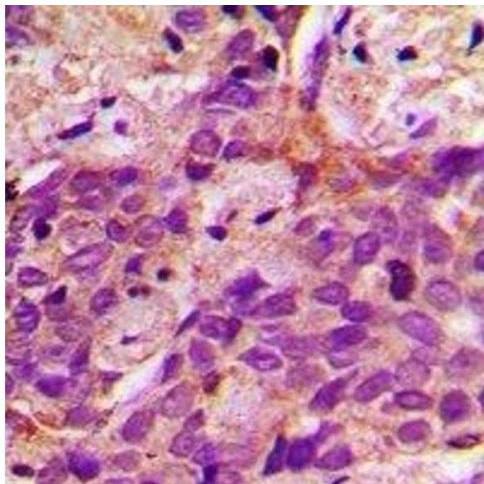
Precaution of Use: This product contains Sodium azide: a POISONOUS AND HAZARDOUS SUBSTANCE which should be handled by trained staff only.

Storage: -20 °C

Storage Comment: Shipped at 4°C. Upon delivery aliquot and store at -20°C for one year. Avoid freeze/thaw cycles.

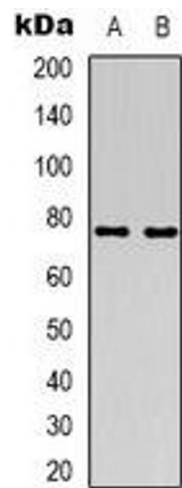
Expiry Date: 12 months

## Images



### Immunohistochemistry

**Image 1.** Immunohistochemical analysis of ACSS1 staining in human prostate cancer formalin fixed paraffin embedded tissue section. The section was pre-treated using heat mediated antigen retrieval with sodium citrate buffer (pH 6.0). The section was then incubated



Western Blotting

**Image 2.** Western blot analysis of ACSS1 expression in HT29 (A), Jurkat (B) whole cell lysates.