



[Go to Product page](#)

Datasheet for ABIN7302810
anti-ATP5I antibody

2 Images

Overview

Quantity:	100 µL
Target:	ATP5I
Reactivity:	Human, Monkey
Host:	Rabbit
Clonality:	Polyclonal
Application:	Western Blotting (WB), Immunohistochemistry (IHC)

Product Details

Immunogen:	KLH-conjugated synthetic peptide encompassing a sequence within the center region of human ATP5I.
Specificity:	Recognizes endogenous levels of ATP5I protein.
Characteristics:	Rabbit polyclonal antibody to ATP5I
Purification:	The antibody was purified by affinity chromatography.

Target Details

Target:	ATP5I
Alternative Name:	ATP5I (ATP5I Products)
Background:	ATP5K, ATP synthase subunit e, mitochondrial, ATPase subunit e
Gene ID:	521
UniProt:	P56385

Target Details

Pathways: [Proton Transport, Ribonucleoside Biosynthetic Process](#)

Application Details

Application Notes: WB (1:500 - 1:1000), IH (1:100 - 1:200)

Restrictions: For Research Use only

Handling

Format: Liquid

Buffer: Liquid in PBS, pH 7.3, 0.2 % BSA, and 0.02 % sodium azide.

Preservative: Sodium azide

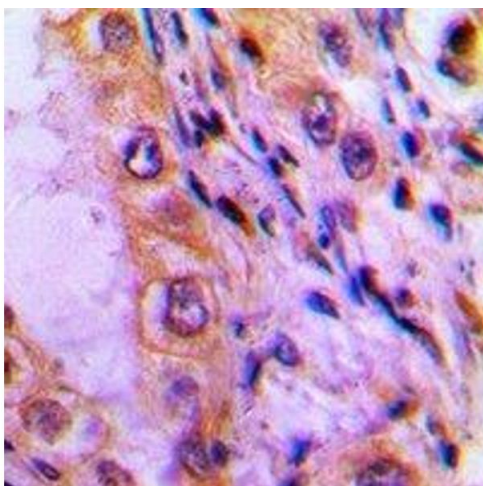
Precaution of Use: This product contains Sodium azide: a POISONOUS AND HAZARDOUS SUBSTANCE which should be handled by trained staff only.

Storage: -20 °C

Storage Comment: Shipped at 4°C. Upon delivery aliquot and store at -20°C for one year. Avoid freeze/thaw cycles.

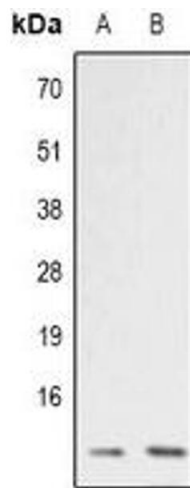
Expiry Date: 12 months

Images



Immunohistochemistry

Image 1. Immunohistochemical analysis of ATP5I staining in human lung cancer formalin fixed paraffin embedded tissue section. The section was pre-treated using heat mediated antigen retrieval with sodium citrate buffer (pH 6.0). The section was then incubated with



Western Blotting

Image 2. Western blot analysis of ATP5I expression in RT4 (A), COLO205 (B) whole cell lysates.