



[Go to Product page](#)

Datasheet for ABIN7302812
anti-ATP5C1 antibody

2 Images

Overview

Quantity:	100 µL
Target:	ATP5C1
Reactivity:	Human, Rabbit, Monkey
Host:	Rabbit
Clonality:	Polyclonal
Conjugate:	This ATP5C1 antibody is un-conjugated
Application:	Western Blotting (WB), Immunohistochemistry (IHC)

Product Details

Immunogen:	KLH-conjugated synthetic peptide encompassing a sequence within the center region of human ATP5C1.
Specificity:	Recognizes endogenous levels of ATP5C1 protein.
Characteristics:	Rabbit polyclonal antibody to ATP5C1
Purification:	The antibody was purified by affinity chromatography.

Target Details

Target:	ATP5C1
Alternative Name:	ATP5C1 (ATP5C1 Products)
Background:	ATP5C, ATP5CL1, ATP synthase subunit gamma, mitochondrial, F-ATPase gamma subunit
Gene ID:	509

Target Details

UniProt: [P36542](#)

Pathways: [Proton Transport, Ribonucleoside Biosynthetic Process](#)

Application Details

Application Notes: WB (1:500 - 1:1000), IH (1:100 - 1:200)

Restrictions: For Research Use only

Handling

Format: Liquid

Buffer: Liquid in PBS, pH 7.3, 0.2 % BSA, and 0.02 % sodium azide.

Preservative: Sodium azide

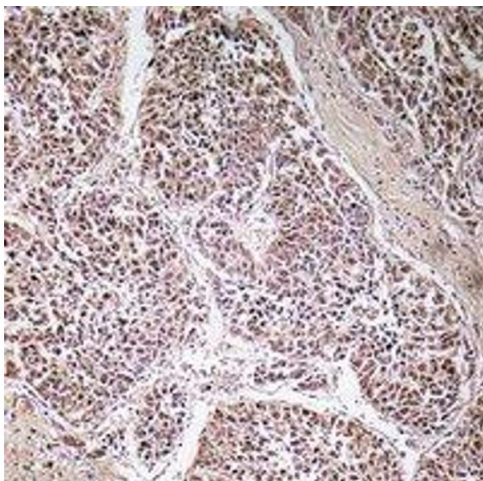
Precaution of Use: This product contains Sodium azide: a POISONOUS AND HAZARDOUS SUBSTANCE which should be handled by trained staff only.

Storage: -20 °C

Storage Comment: Shipped at 4°C. Upon delivery aliquot and store at -20°C for one year. Avoid freeze/thaw cycles.

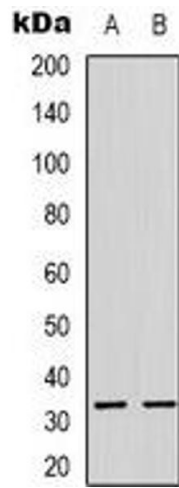
Expiry Date: 12 months

Images



Immunohistochemistry

Image 1. Immunohistochemical analysis of ATP5C1 staining in human liver cancer formalin fixed paraffin embedded tissue section. The section was pre-treated using heat mediated antigen retrieval with sodium citrate buffer (pH 6.0). The section was then incubated wi



Western Blotting

Image 2. Western blot analysis of ATP5C1 expression in HeLa (A), HepG2 (B) whole cell lysates.