

Datasheet for ABIN7302822
anti-DMGDH antibody (C-Term)[Go to Product page](#)

2 Images

Overview

Quantity:	100 µL
Target:	DMGDH
Binding Specificity:	C-Term
Reactivity:	Human, Monkey
Host:	Rabbit
Clonality:	Polyclonal
Application:	Western Blotting (WB), Immunohistochemistry (IHC)

Product Details

Immunogen:	KLH-conjugated synthetic peptide encompassing a sequence within the C-term region of human DMGDH.
Specificity:	Recognizes endogenous levels of DMGDH protein.
Characteristics:	Rabbit polyclonal antibody to DMGDH
Purification:	The antibody was purified by affinity chromatography.

Target Details

Target:	DMGDH
Alternative Name:	DMGDH (DMGDH Products)
Background:	Dimethylglycine dehydrogenase, mitochondrial, ME2GLYDH
Gene ID:	29958

Target Details

UniProt: [Q9UI17](#)

Application Details

Application Notes: WB (1:500 - 1:1000), IH (1:100 - 1:200)

Restrictions: For Research Use only

Handling

Format: Liquid

Buffer: Liquid in PBS, pH 7.3, 0.2 % BSA, and 0.02 % sodium azide.

Preservative: Sodium azide

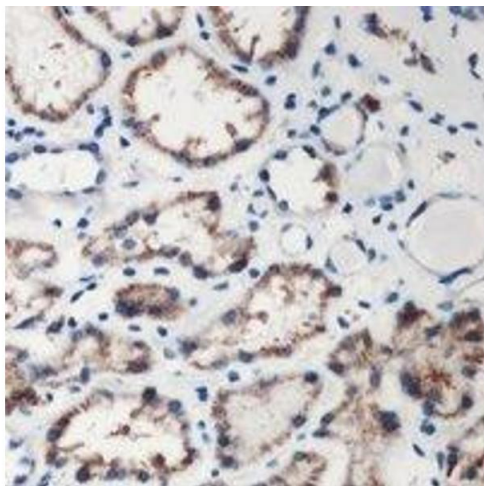
Precaution of Use: This product contains Sodium azide: a POISONOUS AND HAZARDOUS SUBSTANCE which should be handled by trained staff only.

Storage: -20 °C

Storage Comment: Shipped at 4°C. Upon delivery aliquot and store at -20°C for one year. Avoid freeze/thaw cycles.

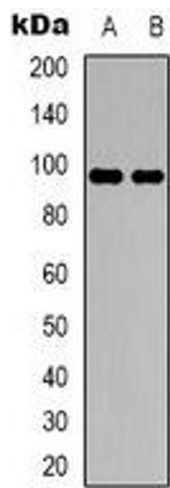
Expiry Date: 12 months

Images



Immunohistochemistry

Image 1. Immunohistochemical analysis of DMGDH staining in human kidney formalin fixed paraffin embedded tissue section. The section was pre-treated using heat mediated antigen retrieval with sodium citrate buffer (pH 6.0). The section was then incubated with the



Western Blotting

Image 2. Western blot analysis of DMGDH expression in HepG2 (A), A549 (B) whole cell lysates.