



[Go to Product page](#)

Datasheet for ABIN7302824

## anti-TUFM antibody

### 2 Images

#### Overview

Quantity:	100 µL
Target:	TUFM (Tufm)
Reactivity:	Human, Mouse, Rat, Dog, Cow, Monkey, Pig
Host:	Rabbit
Clonality:	Polyclonal
Conjugate:	This TUFM antibody is un-conjugated
Application:	Western Blotting (WB), Immunohistochemistry (IHC)

#### Product Details

Immunogen:	KLH-conjugated synthetic peptide encompassing a sequence within the center region of human TUFM.
Specificity:	Recognizes endogenous levels of TUFM protein.
Characteristics:	Rabbit polyclonal antibody to TUFM
Purification:	The antibody was purified by affinity chromatography.

#### Target Details

Target:	TUFM (Tufm)
Alternative Name:	TUFM ( <a href="#">Tufm Products</a> )
Background:	Elongation factor Tu, mitochondrial, EF-Tu, P43
Gene ID:	7284, 233870, 293481

## Target Details

---

UniProt: [P49411](#), [Q8BFR5](#), [P85834](#)

## Application Details

---

Application Notes: WB (1:500 - 1:1000), IH (1:100 - 1:200)

Restrictions: For Research Use only

## Handling

---

Format: Liquid

Buffer: Liquid in PBS, pH 7.3, 0.2 % BSA, and 0.02 % sodium azide.

Preservative: Sodium azide

Precaution of Use: This product contains Sodium azide: a POISONOUS AND HAZARDOUS SUBSTANCE which should be handled by trained staff only.

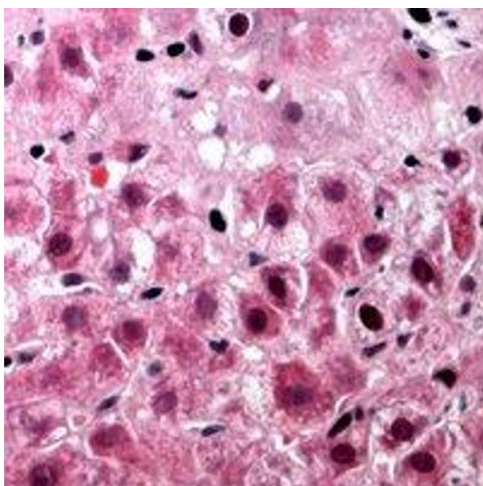
Storage: -20 °C

Storage Comment: Shipped at 4°C. Upon delivery aliquot and store at -20°C for one year. Avoid freeze/thaw cycles.

Expiry Date: 12 months

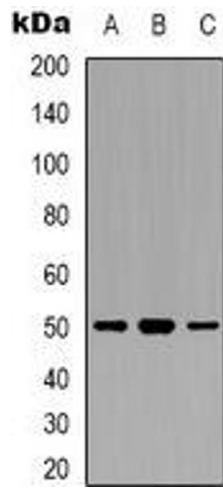
## Images

---



### Immunohistochemistry

**Image 1.** Immunohistochemical analysis of TUFM staining in human liver cancer formalin fixed paraffin embedded tissue section. The section was pre-treated using heat mediated antigen retrieval with sodium citrate buffer (pH 6.0). The section was then incubated with



### Western Blotting

**Image 2.** Western blot analysis of TUFM expression in H1299 (A), A431 (B), NIH3T3 (C) whole cell lysates.