

Datasheet for ABIN7302826

anti-EIF3D antibody**2** Images[Go to Product page](#)

Overview

Quantity:	100 µL
Target:	EIF3D
Reactivity:	Human, Mouse, Rat, Cow, Monkey
Host:	Rabbit
Clonality:	Polyclonal
Application:	Western Blotting (WB), Immunohistochemistry (IHC)

Product Details

Immunogen:	KLH-conjugated synthetic peptide encompassing a sequence within the center region of human EIF3D.
Specificity:	Recognizes endogenous levels of EIF3D protein.
Characteristics:	Rabbit polyclonal antibody to EIF3D
Purification:	The antibody was purified by affinity chromatography.

Target Details

Target:	EIF3D
Alternative Name:	EIF3D (EIF3D Products)
Background:	EIF3S7, Eukaryotic translation initiation factor 3 subunit D, eIF3d, Eukaryotic translation initiation factor 3 subunit 7, eIF-3-zeta, eIF3 p66
Gene ID:	8664, 55944, 362952

Target Details

UniProt:	O15371 , O70194 , Q6AYK8
Pathways:	Ribonucleoprotein Complex Subunit Organization

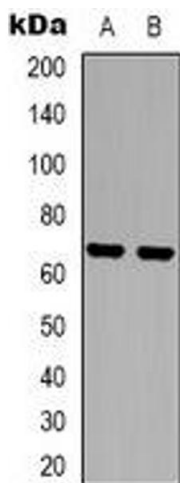
Application Details

Application Notes:	WB (1:500 - 1:1000), IH (1:100 - 1:200)
Restrictions:	For Research Use only

Handling

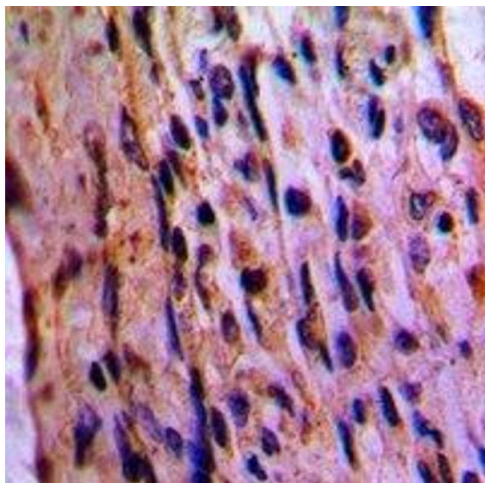
Format:	Liquid
Buffer:	Liquid in PBS, pH 7.3, 0.2 % BSA, and 0.02 % sodium azide.
Preservative:	Sodium azide
Precaution of Use:	This product contains Sodium azide: a POISONOUS AND HAZARDOUS SUBSTANCE which should be handled by trained staff only.
Storage:	-20 °C
Storage Comment:	Shipped at 4°C. Upon delivery aliquot and store at -20°C for one year. Avoid freeze/thaw cycles.
Expiry Date:	12 months

Images



Western Blotting

Image 1. Western blot analysis of EIF3D expression in HeLa (A), NIH3T3 (B) whole cell lysates.



Immunohistochemistry

Image 2. Immunohistochemical analysis of EIF3D staining in human lung cancer formalin fixed paraffin embedded tissue section. The section was pre-treated using heat mediated antigen retrieval with sodium citrate buffer (pH 6.0). The section was then incubated with