

Datasheet for ABIN7302832

anti-SAR1B antibody**2** Images[Go to Product page](#)

Overview

Quantity:	100 µL
Target:	SAR1B
Reactivity:	Human, Mouse, Rat, Cow, Pig
Host:	Rabbit
Clonality:	Polyclonal
Conjugate:	This SAR1B antibody is un-conjugated
Application:	Western Blotting (WB), Immunohistochemistry (IHC)

Product Details

Immunogen:	KLH-conjugated synthetic peptide encompassing a sequence within the center region of human SAR1B.
Specificity:	Recognizes endogenous levels of SAR1B protein.
Characteristics:	Rabbit polyclonal antibody to SAR1B
Purification:	The antibody was purified by affinity chromatography.

Target Details

Target:	SAR1B
Alternative Name:	SAR1B (SAR1B Products)
Background:	SARA2, SARB, GTP-binding protein SAR1b, GTP-binding protein B, GTBPB
Gene ID:	51128, 66397, 287276

Target Details

UniProt: [Q9Y6B6](#), [Q9CQC9](#), [Q5HZY2](#)

Pathways: [Lipid Metabolism](#)

Application Details

Application Notes: WB (1:500 - 1:1000), IH (1:100 - 1:200)

Restrictions: For Research Use only

Handling

Format: Liquid

Buffer: Liquid in PBS, pH 7.3, 0.2 % BSA, and 0.02 % sodium azide.

Preservative: Sodium azide

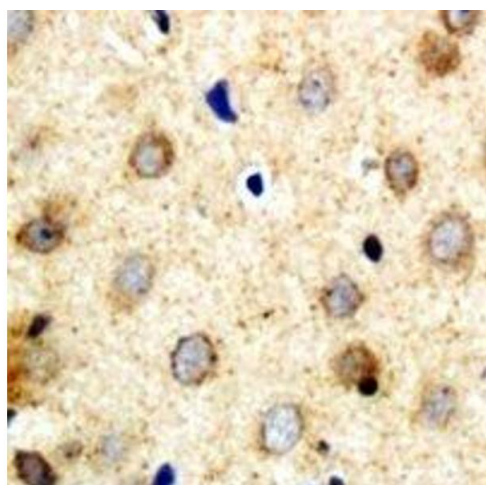
Precaution of Use: This product contains Sodium azide: a POISONOUS AND HAZARDOUS SUBSTANCE which should be handled by trained staff only.

Storage: -20 °C

Storage Comment: Shipped at 4°C. Upon delivery aliquot and store at -20°C for one year. Avoid freeze/thaw cycles.

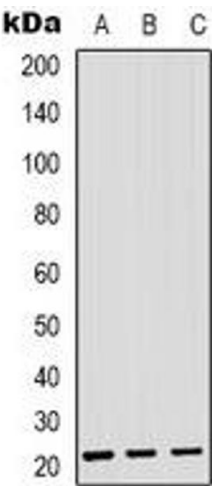
Expiry Date: 12 months

Images



Immunohistochemistry

Image 1. Immunohistochemical analysis of SAR1B staining in human brain formalin fixed paraffin embedded tissue section. The section was pre-treated using heat mediated antigen retrieval with sodium citrate buffer (pH 6.0). The section was then incubated with the a



Western Blotting

Image 2. Western blot analysis of SAR1B expression in HEK293T (A), HeLa (B), RAW264.7 (C) whole cell lysates.