

Datasheet for ABIN7302840

anti-NUTF2 antibody**2** Images[Go to Product page](#)

Overview

Quantity:	100 µL
Target:	NUTF2
Reactivity:	Human, Rat, Mouse, Cow
Host:	Rabbit
Clonality:	Polyclonal
Conjugate:	This NUTF2 antibody is un-conjugated
Application:	Western Blotting (WB), Immunohistochemistry (IHC)

Product Details

Immunogen:	KLH-conjugated synthetic peptide encompassing a sequence within the center region of human PP15.
Specificity:	Recognizes endogenous levels of PP15 protein.
Characteristics:	Rabbit polyclonal antibody to PP15
Purification:	The antibody was purified by affinity chromatography.

Target Details

Target:	NUTF2
Alternative Name:	PP15 (NUTF2 Products)
Background:	NTF2, Nuclear transport factor 2, NTF-2, Placental protein 15, PP15
Gene ID:	10204, 621832, 68051

Target Details

UniProt:	P61970 , P61971 , P61972
Pathways:	Protein targeting to Nucleus , SARS-CoV-2 Protein Interactome

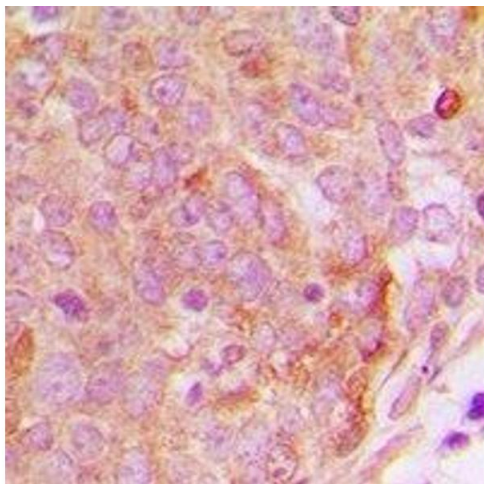
Application Details

Application Notes:	WB (1:500 - 1:1000), IH (1:100 - 1:200)
Restrictions:	For Research Use only

Handling

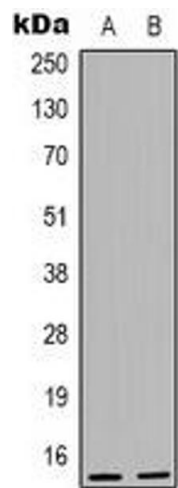
Format:	Liquid
Buffer:	Liquid in PBS, pH 7.3, 0.2 % BSA, and 0.02 % sodium azide.
Preservative:	Sodium azide
Precaution of Use:	This product contains Sodium azide: a POISONOUS AND HAZARDOUS SUBSTANCE which should be handled by trained staff only.
Storage:	-20 °C
Storage Comment:	Shipped at 4°C. Upon delivery aliquot and store at -20°C for one year. Avoid freeze/thaw cycles.
Expiry Date:	12 months

Images



Immunohistochemistry

Image 1. Immunohistochemical analysis of PP15 staining in human breast cancer formalin fixed paraffin embedded tissue section. The section was pre-treated using heat mediated antigen retrieval with sodium citrate buffer (pH 6.0). The section was then incubated with



Western Blotting

Image 2. Western blot analysis of PP15 expression in K562 (A), Hela (B) whole cell lysates.