

Datasheet for ABIN7302854
anti-RSAD1 antibody



[Go to Product page](#)

1 Image

Overview

Quantity:	100 µL
Target:	RSAD1
Reactivity:	Human, Mouse, Cow
Host:	Rabbit
Clonality:	Polyclonal
Conjugate:	This RSAD1 antibody is un-conjugated
Application:	Western Blotting (WB)

Product Details

Immunogen:	KLH-conjugated synthetic peptide encompassing a sequence within the center region of human RSAD1.
Specificity:	Recognizes endogenous levels of RSAD1 protein.
Characteristics:	Rabbit polyclonal antibody to RSAD1
Purification:	The antibody was purified by affinity chromatography.

Target Details

Target:	RSAD1
Alternative Name:	RSAD1 (RSAD1 Products)
Background:	Radical S-adenosyl methionine domain-containing protein 1, mitochondrial, Oxygen-independent coproporphyrinogen-III oxidase-like protein RSAD1

Target Details

Gene ID:	55316, 237926
UniProt:	Q9HA92 , Q5SUV1

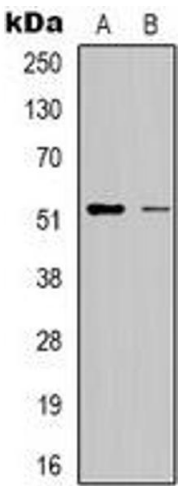
Application Details

Application Notes:	WB (1:500 - 1:1000)
Restrictions:	For Research Use only

Handling

Format:	Liquid
Buffer:	Liquid in PBS, pH 7.3, 0.2 % BSA, and 0.02 % sodium azide.
Preservative:	Sodium azide
Precaution of Use:	This product contains Sodium azide: a POISONOUS AND HAZARDOUS SUBSTANCE which should be handled by trained staff only.
Storage:	-20 °C
Storage Comment:	Shipped at 4°C. Upon delivery aliquot and store at -20°C for one year. Avoid freeze/thaw cycles.
Expiry Date:	12 months

Images



Western Blotting

Image 1. Western blot analysis of RSAD1 expression in HepG2 (A), Hela (B) whole cell lysates.