

Datasheet for ABIN7302858

anti-ARHGEF3 antibody (C-Term)**3** Images[Go to Product page](#)

Overview

Quantity:	100 µL
Target:	ARHGEF3
Binding Specificity:	C-Term
Reactivity:	Human, Monkey
Host:	Rabbit
Clonality:	Polyclonal
Conjugate:	This ARHGEF3 antibody is un-conjugated
Application:	Western Blotting (WB), Immunohistochemistry (IHC), Immunofluorescence (IF), Immunochromatography (IC)

Product Details

Immunogen:	KLH-conjugated synthetic peptide encompassing a sequence within the C-term region of human XPLN.
Specificity:	Recognizes endogenous levels of XPLN protein.
Characteristics:	Rabbit polyclonal antibody to XPLN
Purification:	The antibody was purified by affinity chromatography.

Target Details

Target:	ARHGEF3
Alternative Name:	XPLN (ARHGEF3 Products)

Target Details

Background:	Rho guanine nucleotide exchange factor 3, Exchange factor found in platelets and leukemic and neuronal tissues, XPLN
Gene ID:	50650
UniProt:	Q9NR81
Pathways:	Neurotrophin Signaling Pathway

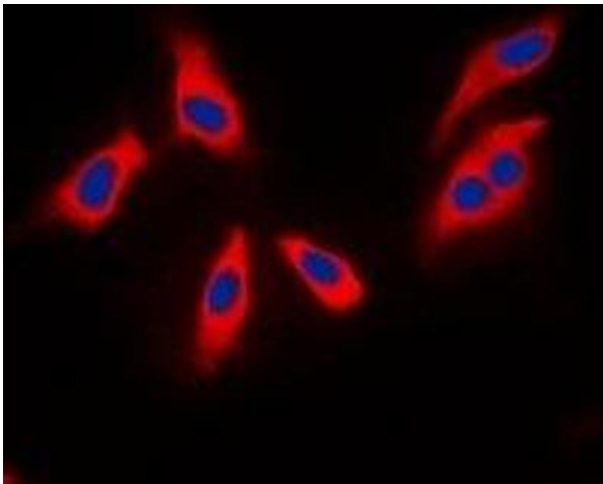
Application Details

Application Notes:	WB (1:500 - 1:1000), IH (1:100 - 1:200), IF/IC (1:100 - 1:500)
Restrictions:	For Research Use only

Handling

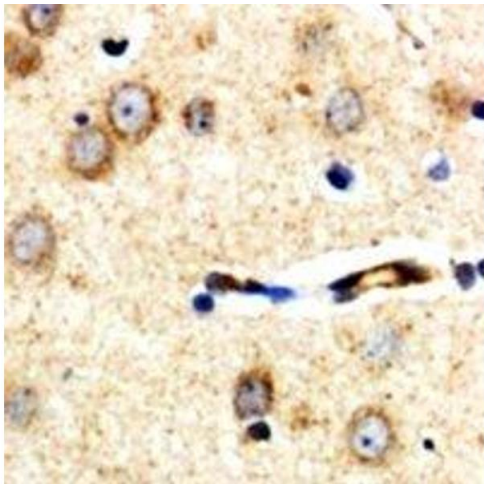
Format:	Liquid
Buffer:	Liquid in PBS, pH 7.3, 0.2 % BSA, and 0.02 % sodium azide.
Preservative:	Sodium azide
Precaution of Use:	This product contains Sodium azide: a POISONOUS AND HAZARDOUS SUBSTANCE which should be handled by trained staff only.
Storage:	-20 °C
Storage Comment:	Shipped at 4°C. Upon delivery aliquot and store at -20°C for one year. Avoid freeze/thaw cycles.
Expiry Date:	12 months

Images



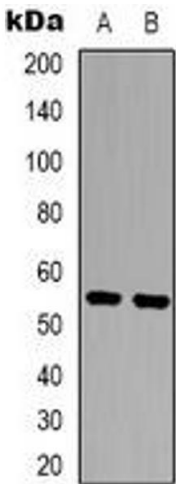
Immunofluorescence

Image 1. Immunofluorescent analysis of XPLN staining in MCF7 cells. Formalin-fixed cells were permeabilized with 0.1% Triton X-100 in TBS for 5-10 minutes and blocked with 3% BSA-PBS for 30 minutes at room temperature. Cells were probed with the primary antibody i



Immunohistochemistry

Image 2. Immunohistochemical analysis of XPLN staining in human brain formalin fixed paraffin embedded tissue section. The section was pre-treated using heat mediated antigen retrieval with sodium citrate buffer (pH 6.0). The section was then incubated with the an



Western Blotting

Image 3. Western blot analysis of XPLN expression in MCF7 (A), COLO205 (B) whole cell lysates.