

Datasheet for ABIN7302868

anti-TCEAL1 antibody**3** Images[Go to Product page](#)

Overview

Quantity:	100 µL
Target:	TCEAL1
Reactivity:	Human, Mouse, Rat, Cow
Host:	Rabbit
Clonality:	Polyclonal
Conjugate:	This TCEAL1 antibody is un-conjugated
Application:	Western Blotting (WB), Immunohistochemistry (IHC), Immunofluorescence (IF), Immunochromatography (IC)

Product Details

Immunogen:	KLH-conjugated synthetic peptide encompassing a sequence within the center region of human TCEAL1.
Specificity:	Recognizes endogenous levels of TCEAL1 protein.
Characteristics:	Rabbit polyclonal antibody to TCEAL1
Purification:	The antibody was purified by affinity chromatography.

Target Details

Target:	TCEAL1
Alternative Name:	TCEAL1 (TCEAL1 Products)
Background:	SIIR, Transcription elongation factor A protein-like 1, TCEA-like protein 1, Nuclear phosphoprotein p21/SIIR, Transcription elongation factor S-II protein-like 1

Target Details

Gene ID: 9338, 237052, 302593

UniProt: [Q15170](#), [Q921P9](#), [Q5PPP3](#)

Application Details

Application Notes: WB (1:500 - 1:1000), IH (1:100 - 1:200), IF/IC (1:100 - 1:500)

Restrictions: For Research Use only

Handling

Format: Liquid

Buffer: Liquid in PBS, pH 7.3, 0.2 % BSA, and 0.02 % sodium azide.

Preservative: Sodium azide

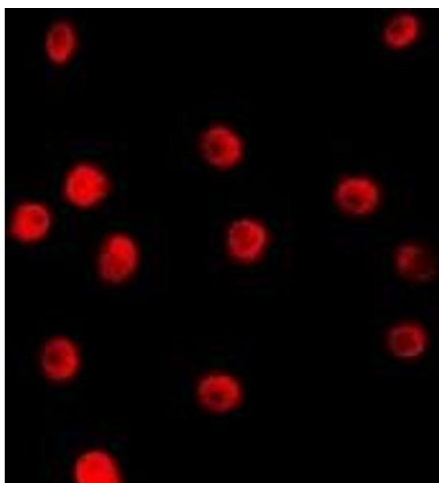
Precaution of Use: This product contains Sodium azide: a POISONOUS AND HAZARDOUS SUBSTANCE which should be handled by trained staff only.

Storage: -20 °C

Storage Comment: Shipped at 4°C. Upon delivery aliquot and store at -20°C for one year. Avoid freeze/thaw cycles.

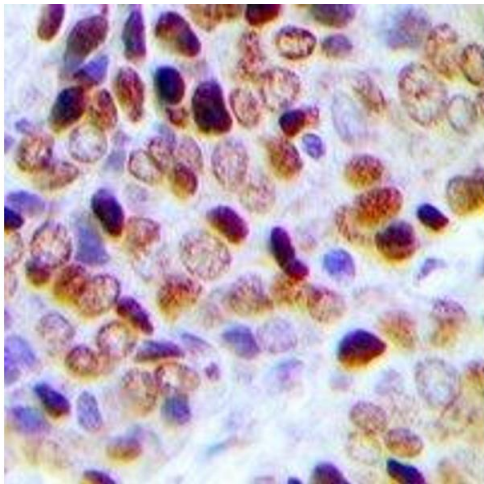
Expiry Date: 12 months

Images



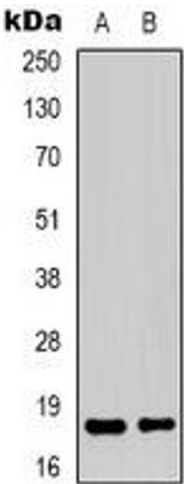
Immunofluorescence

Image 1. Immunofluorescent analysis of TCEAL1 staining in HepG2 cells. Formalin-fixed cells were permeabilized with 0.1% Triton X-100 in TBS for 5-10 minutes and blocked with 3% BSA-PBS for 30 minutes at room temperature. Cells were probed with the primary antibody.



Immunohistochemistry

Image 2. Immunohistochemical analysis of TCEAL1 staining in human prostate cancer formalin fixed paraffin embedded tissue section. The section was pre-treated using heat mediated antigen retrieval with sodium citrate buffer (pH 6.0). The section was then incubated



Western Blotting

Image 3. Western blot analysis of TCEAL1 expression in HepG2 (A), Hela (B) whole cell lysates.