

Datasheet for ABIN7302906

**anti-CD300d antibody**[Go to Product page](#)**1** Image

## Overview

Quantity:	100 µL
Target:	CD300d (CD300LD)
Reactivity:	Human, Mouse
Host:	Rabbit
Clonality:	Polyclonal
Application:	Western Blotting (WB)

## Product Details

Immunogen:	KLH-conjugated synthetic peptide encompassing a sequence within the center region of human CD300d.
Specificity:	Recognizes endogenous levels of CD300d protein.
Characteristics:	Rabbit polyclonal antibody to CD300d
Purification:	The antibody was purified by affinity chromatography.

## Target Details

Target:	CD300d (CD300LD)
Alternative Name:	CD300d ( <a href="#">CD300LD Products</a> )
Background:	CD300D, CMRF35A4, CMRF35-like molecule 4, CLM-4, CD300 antigen-like family member D, CMRF35-A4, CD300d
Gene ID:	100131439

Target Details

UniProt: Q6UXZ3

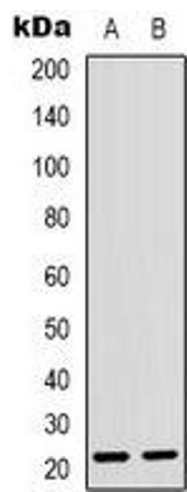
Application Details

Application Notes:	WB (1:500 - 1:1000)
Restrictions:	For Research Use only

Handling

Format:	Liquid
Buffer:	Liquid in PBS, pH 7.3, 0.2 % BSA, and 0.02 % sodium azide.
Preservative:	Sodium azide
Precaution of Use:	This product contains Sodium azide: a POISONOUS AND HAZARDOUS SUBSTANCE which should be handled by trained staff only.
Storage:	-20 °C
Storage Comment:	Shipped at 4°C. Upon delivery aliquot and store at -20°C for one year. Avoid freeze/thaw cycles.
Expiry Date:	12 months

Images



Western Blotting

**Image 1.** Western blot analysis of CD300d expression in U2OS (A), NIH3T3 (B) whole cell lysates.