

Datasheet for ABIN7302928
anti-PTEN antibody (C-Term)[Go to Product page](#)

3 Images

Overview

Quantity:	100 µL
Target:	PTEN
Binding Specificity:	C-Term
Reactivity:	Human, Mouse, Rat, Dog, Pig, Monkey
Host:	Rabbit
Clonality:	Polyclonal
Conjugate:	This PTEN antibody is un-conjugated
Application:	Western Blotting (WB), Immunohistochemistry (IHC), Immunofluorescence (IF), Immunochromatography (IC)

Product Details

Immunogen:	KLH-conjugated synthetic peptide encompassing a sequence within the C-term region of human PTEN.
Specificity:	Recognizes endogenous levels of PTEN protein.
Characteristics:	Rabbit polyclonal antibody to PTEN
Purification:	The antibody was purified by affinity chromatography.

Target Details

Target:	PTEN
Alternative Name:	PTEN (PTEN Products)

Target Details

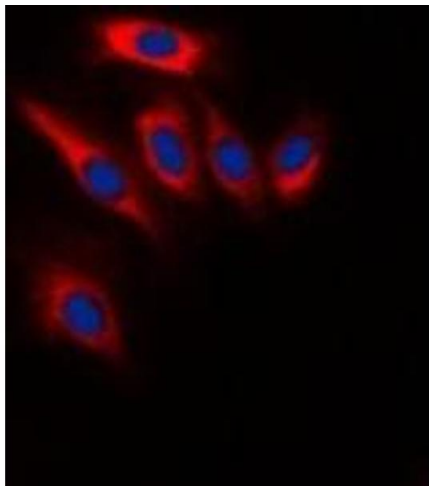
Background:	MMAC1, TEP1, Phosphatidylinositol 3,4,5-trisphosphate 3-phosphatase and dual-specificity protein phosphatase PTEN, Mutated in multiple advanced cancers 1, Phosphatase and tensin homolog
Gene ID:	5728, 19211
UniProt:	P60484 , O08586
Pathways:	TCR Signaling , Fc-epsilon Receptor Signaling Pathway , EGFR Signaling Pathway , Inositol Metabolic Process , Synaptic Membrane , Regulation of Cell Size , Autophagy , Platelet-derived growth Factor Receptor Signaling , Signaling of Hepatocyte Growth Factor Receptor , BCR Signaling

Application Details

Application Notes:	WB (1:500 - 1:1000), IH (1:100 - 1:200), IF/IC (1:100 - 1:500)
Restrictions:	For Research Use only

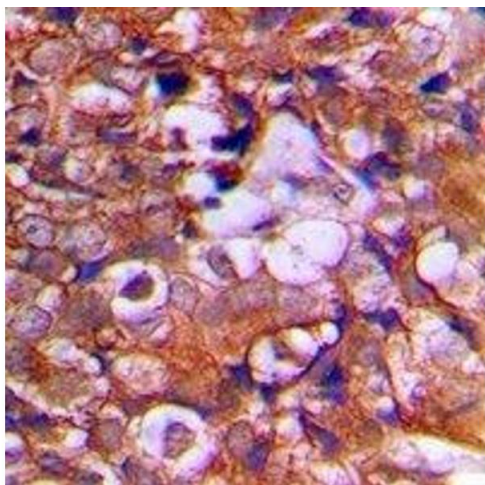
Handling

Format:	Liquid
Buffer:	Liquid in PBS, pH 7.3, 0.2 % BSA, and 0.02 % sodium azide.
Preservative:	Sodium azide
Precaution of Use:	This product contains Sodium azide: a POISONOUS AND HAZARDOUS SUBSTANCE which should be handled by trained staff only.
Storage:	-20 °C
Storage Comment:	Shipped at 4°C. Upon delivery aliquot and store at -20°C for one year. Avoid freeze/thaw cycles.
Expiry Date:	12 months



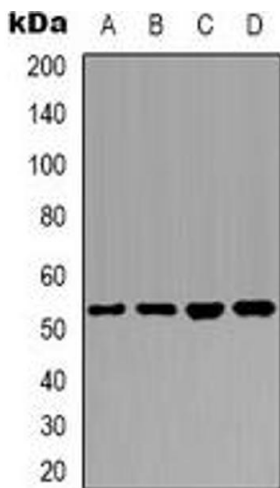
Immunofluorescence

Image 1. Immunofluorescent analysis of PTEN staining in HeLa cells. Formalin-fixed cells were permeabilized with 0.1% Triton X-100 in TBS for 5-10 minutes and blocked with 3% BSA-PBS for 30 minutes at room temperature. Cells were probed with the primary antibody i



Immunohistochemistry

Image 2. Immunohistochemical analysis of PTEN staining in human prostate cancer formalin fixed paraffin embedded tissue section. The section was pre-treated using heat mediated antigen retrieval with sodium citrate buffer (pH 6.0). The section was then incubated w



Western Blotting

Image 3. Western blot analysis of PTEN expression in HeLa (A), MCF7 (B), NIH3T3 (C), mouse brain (D) whole cell lysates.