



[Go to Product page](#)

Datasheet for ABIN7302942
anti-SPHK2 antibody (C-Term)

2 Images

Overview

Quantity:	100 µL
Target:	SPHK2
Binding Specificity:	C-Term
Reactivity:	Human, Mouse, Rat
Host:	Rabbit
Clonality:	Polyclonal
Conjugate:	This SPHK2 antibody is un-conjugated
Application:	Western Blotting (WB), Immunohistochemistry (IHC)

Product Details

Immunogen:	KLH-conjugated synthetic peptide encompassing a sequence within the C-term region of human SPHK2.
Specificity:	Recognizes endogenous levels of SPHK2 protein.
Characteristics:	Rabbit polyclonal antibody to SPHK2
Purification:	The antibody was purified by affinity chromatography.

Target Details

Target:	SPHK2
Alternative Name:	SPHK2 (SPHK2 Products)
Background:	Sphingosine kinase 2, SK 2, SPK 2

Target Details

Gene ID: 56848, 56632

UniProt: [Q9NRA0, Q9JIA7](#)

Pathways: [VEGF Signaling](#)

Application Details

Application Notes: WB (1:500 - 1:1000), IH (1:100 - 1:200)

Restrictions: For Research Use only

Handling

Format: Liquid

Buffer: Liquid in PBS, pH 7.3, 0.2 % BSA, and 0.02 % sodium azide.

Preservative: Sodium azide

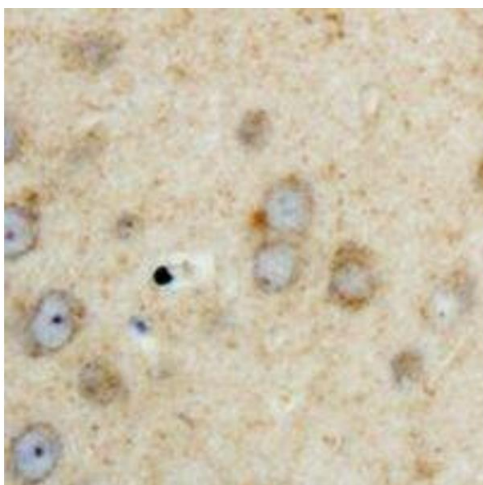
Precaution of Use: This product contains Sodium azide: a POISONOUS AND HAZARDOUS SUBSTANCE which should be handled by trained staff only.

Storage: -20 °C

Storage Comment: Shipped at 4°C. Upon delivery aliquot and store at -20°C for one year. Avoid freeze/thaw cycles.

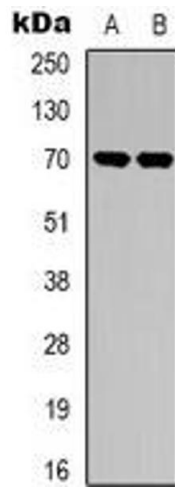
Expiry Date: 12 months

Images



Immunohistochemistry

Image 1. Immunohistochemical analysis of SPHK2 staining in human brain formalin fixed paraffin embedded tissue section. The section was pre-treated using heat mediated antigen retrieval with sodium citrate buffer (pH 6.0). The section was then incubated with the a



Western Blotting

Image 2. Western blot analysis of SPHK2 expression in HepG2 (A), HEK293T (B) whole cell lysates.