



[Go to Product page](#)

Datasheet for ABIN7302952
anti-MORF4L1 antibody

3 Images

Overview

Quantity:	100 µL
Target:	MORF4L1
Reactivity:	Human, Mouse
Host:	Rabbit
Clonality:	Polyclonal
Application:	Western Blotting (WB), Immunohistochemistry (IHC), Immunofluorescence (IF), Immunoprecipitation (IP), Immunochromatography (IC)

Product Details

Immunogen:	KLH-conjugated synthetic peptide encompassing a sequence within the center region of human MRG15.
Specificity:	Recognizes endogenous levels of MRG15 protein.
Characteristics:	Rabbit polyclonal antibody to MRG15
Purification:	The antibody was purified by affinity chromatography.

Target Details

Target:	MORF4L1
Alternative Name:	MRG15 (MORF4L1 Products)
Background:	MRG15, Mortality factor 4-like protein 1, MORF-related gene 15 protein, Protein MSL3-1, Transcription factor-like protein MRG15
Gene ID:	10933, 21761

Target Details

UniProt: [Q9UBU8, P60762](#)

Pathways: [Chromatin Binding](#)

Application Details

Application Notes: WB (1:500 - 1:1000), IH (1:100 - 1:200), IF/IC (1:100 - 1:500), IP (1:10 - 1:100)

Restrictions: For Research Use only

Handling

Format: Liquid

Buffer: Liquid in PBS, pH 7.3, 0.2 % BSA, and 0.02 % sodium azide.

Preservative: Sodium azide

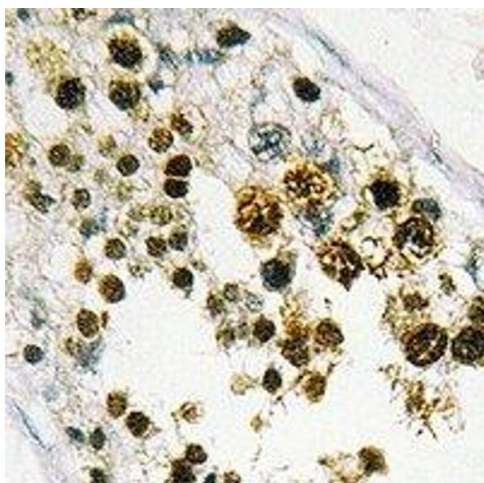
Precaution of Use: This product contains Sodium azide: a POISONOUS AND HAZARDOUS SUBSTANCE which should be handled by trained staff only.

Storage: -20 °C

Storage Comment: Shipped at 4°C. Upon delivery aliquot and store at -20°C for one year. Avoid freeze/thaw cycles.

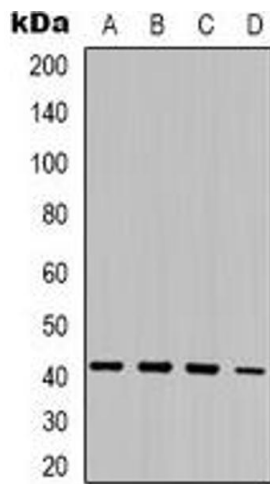
Expiry Date: 12 months

Images



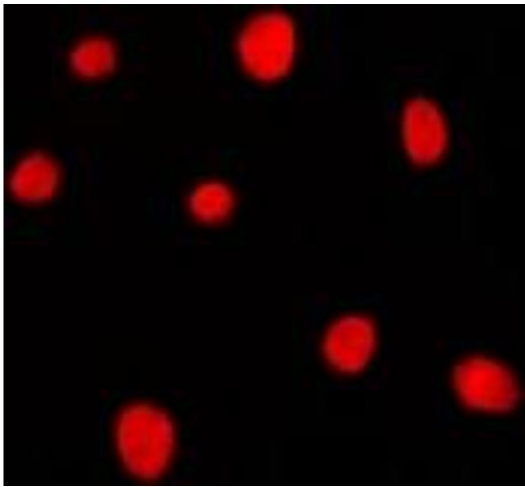
Immunohistochemistry

Image 1. Immunohistochemical analysis of MRG15 staining in human testis formalin fixed paraffin embedded tissue section. The section was pre-treated using heat mediated antigen retrieval with sodium citrate buffer (pH 6.0). The section was then incubated with the



Western Blotting

Image 2. Western blot analysis of MRG15 expression in K562 (A), Jurkat (B), mouse kidney (C), mouse brain (D) whole cell lysates.



Immunofluorescence

Image 3. Immunofluorescent analysis of MRG15 staining in K562 cells. Formalin-fixed cells were permeabilized with 0.1% Triton X-100 in TBS for 5-10 minutes and blocked with 3% BSA-PBS for 30 minutes at room temperature. Cells were probed with the primary antibody