

Datasheet for ABIN7303000

anti-SNRPE antibody (pSer446)



[Go to Product page](#)

2 Images

Overview

Quantity:	100 µL
Target:	SNRPE
Binding Specificity:	pSer446
Reactivity:	Human, Mouse, Rat, Chicken
Host:	Rabbit
Clonality:	Polyclonal
Conjugate:	This SNRPE antibody is un-conjugated
Application:	Western Blotting (WB), Immunohistochemistry (IHC), Immunoprecipitation (IP)

Product Details

Immunogen:	KLH-conjugated synthetic peptide encompassing a sequence within the center region of human B-RAF.
Specificity:	Recognizes endogenous levels of B-RAF (pS446) protein.
Characteristics:	Rabbit polyclonal antibody to B-RAF (pS446)
Purification:	The antibody was purified by affinity chromatography.

Target Details

Target:	SNRPE
Alternative Name:	B-RAF (SNRPE Products)
Background:	BRAF1, RAFB1, Serine/threonine-protein kinase B-raf, Proto-oncogene B-Raf, p94, v-Raf murine

Target Details

	sarcoma viral oncogene homolog B1
Gene ID:	673, 109880
UniProt:	P15056 , P28028
Pathways:	Ribonucleoprotein Complex Subunit Organization , Hepatitis C

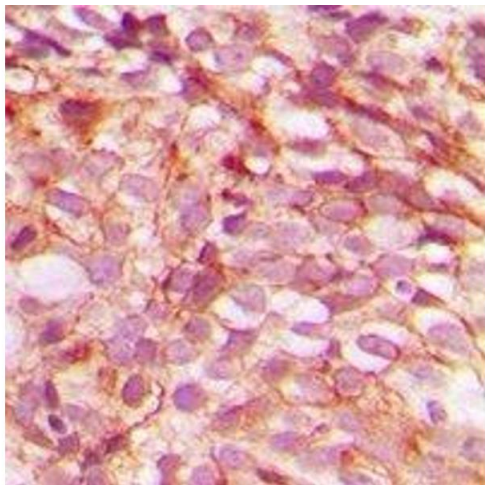
Application Details

Application Notes:	WB (1:500 - 1:1000), IH (1:100 - 1:200), IP (1:10 - 1:100)
Restrictions:	For Research Use only

Handling

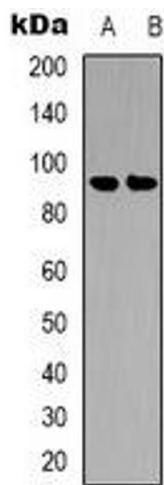
Format:	Liquid
Buffer:	Liquid in PBS, pH 7.3, 0.2 % BSA, and 0.02 % sodium azide.
Preservative:	Sodium azide
Precaution of Use:	This product contains Sodium azide: a POISONOUS AND HAZARDOUS SUBSTANCE which should be handled by trained staff only.
Storage:	-20 °C
Storage Comment:	Shipped at 4°C. Upon delivery aliquot and store at -20°C for one year. Avoid freeze/thaw cycles.
Expiry Date:	12 months

Images



Immunohistochemistry

Image 1. Immunohistochemical analysis of B-RAF (pS446) staining in human breast cancer formalin fixed paraffin embedded tissue section. The section was pre-treated using heat mediated antigen retrieval with sodium citrate buffer (pH 6.0). The section was then incu



Western Blotting

Image 2. Western blot analysis of B-Raf (pS446) expression in K562 (A), HEK293T (B) whole cell lysates.