

Datasheet for ABIN7303008

**anti-RRS1 antibody****2** Images[Go to Product page](#)

## Overview

Quantity:	100 µL
Target:	RRS1
Reactivity:	Human, Rat, Mouse
Host:	Rabbit
Clonality:	Polyclonal
Application:	Western Blotting (WB), Immunohistochemistry (IHC), Immunoprecipitation (IP)

## Product Details

Immunogen:	KLH-conjugated synthetic peptide encompassing a sequence within the center region of human RRS1.
Specificity:	Recognizes endogenous levels of RRS1 protein.
Characteristics:	Rabbit polyclonal antibody to RRS1
Purification:	The antibody was purified by affinity chromatography.

## Target Details

Target:	RRS1
Alternative Name:	RRS1 ( <a href="#">RRS1 Products</a> )
Background:	KIAA0112, RRR, Ribosome biogenesis regulatory protein homolog
Gene ID:	23212, 59014, 297784
UniProt:	<a href="#">Q15050</a> , <a href="#">Q9CYH6</a> , <a href="#">A1A5P2</a>

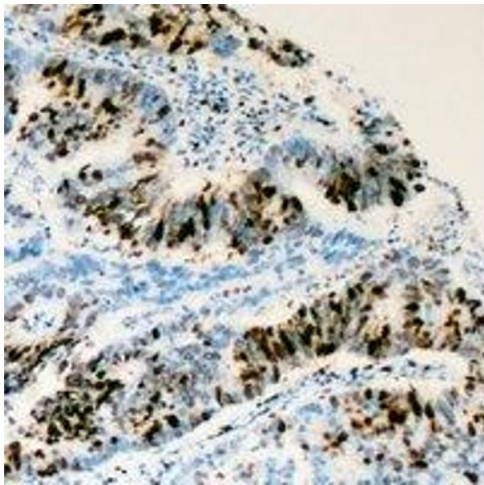
## Application Details

Application Notes:	WB (1:500 - 1:1000), IH (1:100 - 1:200), IP (1:10 - 1:100)
Restrictions:	For Research Use only

## Handling

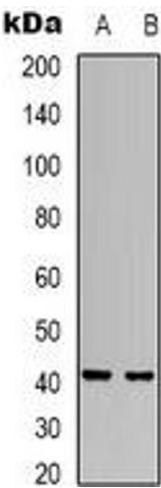
Format:	Liquid
Buffer:	Liquid in PBS, pH 7.3, 0.2 % BSA, and 0.02 % sodium azide.
Preservative:	Sodium azide
Precaution of Use:	This product contains Sodium azide: a POISONOUS AND HAZARDOUS SUBSTANCE which should be handled by trained staff only.
Storage:	-20 °C
Storage Comment:	Shipped at 4°C. Upon delivery aliquot and store at -20°C for one year. Avoid freeze/thaw cycles.
Expiry Date:	12 months

## Images



### Immunohistochemistry

**Image 1.** Immunohistochemical analysis of RRS1 staining in human colon cancer formalin fixed paraffin embedded tissue section. The section was pre-treated using heat mediated antigen retrieval with sodium citrate buffer (pH 6.0). The section was then incubated with



Western Blotting

**Image 2.** Western blot analysis of RRS1 expression in HeLa (A), SHSY5Y (B) whole cell lysates.