



[Go to Product page](#)

Datasheet for ABIN7303010
anti-MRRF antibody (C-Term)

2 Images

Overview

Quantity:	100 µL
Target:	MRRF
Binding Specificity:	C-Term
Reactivity:	Human, Mouse, Rat, Cow
Host:	Rabbit
Clonality:	Polyclonal
Application:	Western Blotting (WB), Immunohistochemistry (IHC)

Product Details

Immunogen:	KLH-conjugated synthetic peptide encompassing a sequence within the C-term region of human MRRF.
Specificity:	Recognizes endogenous levels of MRRF protein.
Characteristics:	Rabbit polyclonal antibody to MRRF
Purification:	The antibody was purified by affinity chromatography.

Target Details

Target:	MRRF
Alternative Name:	MRRF (MRRF Products)
Background:	Ribosome-recycling factor, mitochondrial, RRF, Ribosome-releasing factor, mitochondrial
Gene ID:	92399, 67871, 311903

Target Details

UniProt:	Q96E11 , Q9D6S7 , Q5RKI9
Pathways:	Ribonucleoprotein Complex Subunit Organization

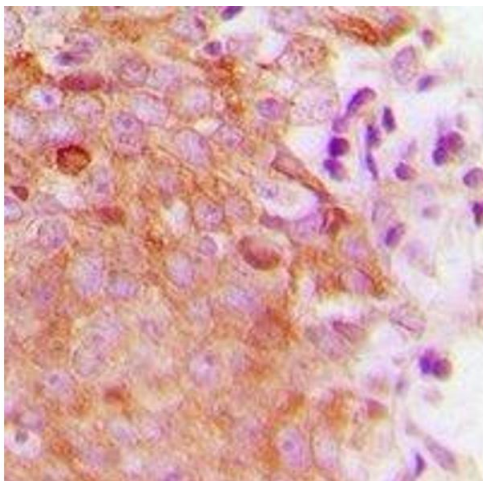
Application Details

Application Notes:	WB (1:500 - 1:1000), IH (1:100 - 1:200)
Restrictions:	For Research Use only

Handling

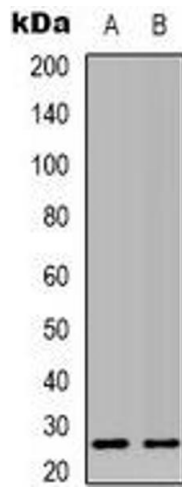
Format:	Liquid
Buffer:	Liquid in PBS, pH 7.3, 0.2 % BSA, and 0.02 % sodium azide.
Preservative:	Sodium azide
Precaution of Use:	This product contains Sodium azide: a POISONOUS AND HAZARDOUS SUBSTANCE which should be handled by trained staff only.
Storage:	-20 °C
Storage Comment:	Shipped at 4°C. Upon delivery aliquot and store at -20°C for one year. Avoid freeze/thaw cycles.
Expiry Date:	12 months

Images



Immunohistochemistry

Image 1. Immunohistochemical analysis of MRRF staining in human breast cancer formalin fixed paraffin embedded tissue section. The section was pre-treated using heat mediated antigen retrieval with sodium citrate buffer (pH 6.0). The section was then incubated with



Western Blotting

Image 2. Western blot analysis of MRRF expression in 293T (A), NIH3T3 (B) whole cell lysates.