

Datasheet for ABIN730303

anti-Leptin Receptor antibody (AA 501-600)**2** Images**1** Publication[Go to Product page](#)

Overview

Quantity:	100 µL
Target:	Leptin Receptor (LEPR)
Binding Specificity:	AA 501-600
Reactivity:	Human, Mouse, Rat
Host:	Rabbit
Clonality:	Polyclonal
Conjugate:	This Leptin Receptor antibody is un-conjugated
Application:	Western Blotting (WB), Flow Cytometry (FACS), Immunofluorescence (Paraffin-embedded Sections) (IF (p)), Immunohistochemistry (Paraffin-embedded Sections) (IHC (p)), Immunofluorescence (Cultured Cells) (IF (cc)), Immunohistochemistry (Frozen Sections) (IHC (fro))

Product Details

Immunogen:	KLH conjugated synthetic peptide derived from human of human Leptin receptor
Isotype:	IgG
Cross-Reactivity:	Human, Mouse, Rat
Predicted Reactivity:	Dog,Cow,Sheep,Pig,Horse,Rabbit
Purification:	Purified by Protein A.

Target Details

Target:	Leptin Receptor (LEPR)
---------	------------------------

Target Details

Alternative Name:	Leptin Receptor (LEPR Products)
Background:	Synonyms: OBR, OB-R, CD295, LEP-R, LEPRD, Leptin receptor, HuB219, OB receptor, LEPR, DB Background: Receptor for obesity factor (leptin). On ligand binding, mediates signaling through JAK2/STAT3. Involved in the regulation of fat metabolism and, in a hematopoietic pathway, required for normal lymphopoiesis. May play a role in reproduction. Can also mediate the ERK/FOS signaling pathway (By similarity).
Gene ID:	3953
UniProt:	P48357
Pathways:	JAK-STAT Signaling , AMPK Signaling , Feeding Behaviour

Application Details

Application Notes:	WB 1:300-5000 FCM 1:20-100 IHC-P 1:200-400 IHC-F 1:100-500 IF(IHC-P) 1:50-200 IF(IHC-F) 1:50-200 IF(ICC) 1:50-200
Restrictions:	For Research Use only

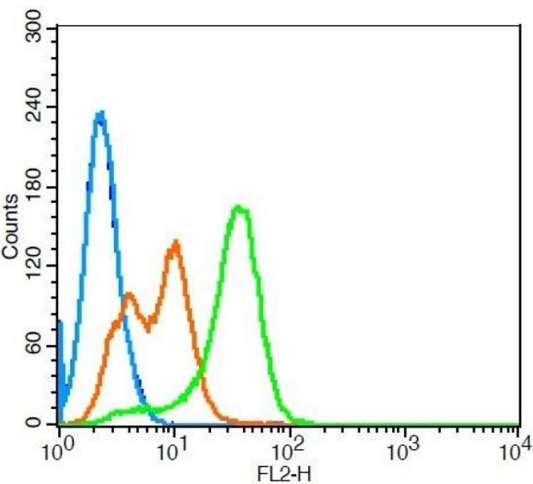
Handling

Format:	Liquid
Concentration:	1 µg/µL
Buffer:	0.01M TBS(pH 7.4) with 1 % BSA, 0.02 % Proclin300 and 50 % Glycerol.
Preservative:	ProClin
Precaution of Use:	This product contains ProClin: a POISONOUS AND HAZARDOUS SUBSTANCE, which should be handled by trained staff only.
Storage:	4 °C, -20 °C
Storage Comment:	Shipped at 4°C. Store at -20°C for one year. Avoid repeated freeze/thaw cycles.
Expiry Date:	12 months

Publications

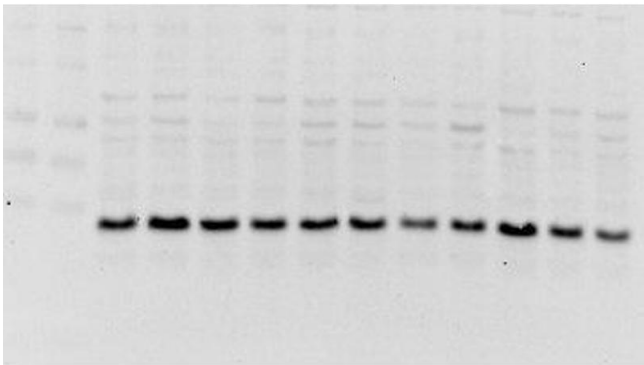
Product cited in: De Matteis, Grandoni, Scatà, Catizone, Reale, Crisà, Moiola: "Evaluation of leptin receptor expression on buffalo leukocytes." in: **Veterinary immunology and immunopathology**, Vol. 177, pp. 16-23, (2016) ([PubMed](#)).

Images



Flow Cytometry

Image 1. K562 cells probed with Leptin receptor Polyclonal Antibody, Unconjugated at 3ug for 30 minutes followed by incubation with a conjugated secondary (PE Conjugated) (green) for 30 minutes compared to control cells (blue), secondary only (light blue) and isotype control (orange).



Western Blotting

Image 2. Image kindly submitted by Jennifer DeMuro as part of the Free Sample Program. Mouse brain lysates probed with Rabbit Anti-Leptin receptor Polyclonal Antibody