

Datasheet for ABIN7303058

anti-PSKH1 antibody[Go to Product page](#)**2** Images

Overview

Quantity:	100 µL
Target:	PSKH1
Reactivity:	Human, Mouse, Cow, Chicken, Pig
Host:	Rabbit
Clonality:	Polyclonal
Application:	Western Blotting (WB), Immunohistochemistry (IHC)

Product Details

Immunogen:	KLH-conjugated synthetic peptide encompassing a sequence within the center region of human PSKH1.
Specificity:	Recognizes endogenous levels of PSKH1 protein.
Characteristics:	Rabbit polyclonal antibody to PSKH1
Purification:	The antibody was purified by affinity chromatography.

Target Details

Target:	PSKH1
Alternative Name:	PSKH1 (PSKH1 Products)
Background:	Serine/threonine-protein kinase H1, Protein serine kinase H1, PSK-H1
Gene ID:	5681, 244631
UniProt:	P11801 , Q91YA2

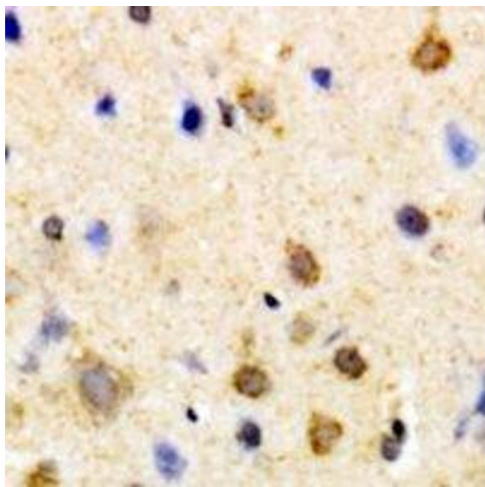
Application Details

Application Notes:	WB (1:500 - 1:1000), IH (1:100 - 1:200)
Restrictions:	For Research Use only

Handling

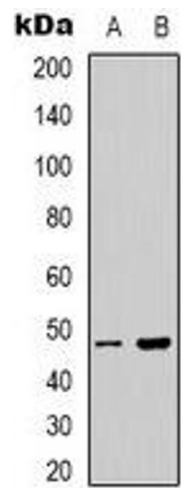
Format:	Liquid
Buffer:	Liquid in PBS, pH 7.3, 0.2 % BSA, and 0.02 % sodium azide.
Preservative:	Sodium azide
Precaution of Use:	This product contains Sodium azide: a POISONOUS AND HAZARDOUS SUBSTANCE which should be handled by trained staff only.
Storage:	-20 °C
Storage Comment:	Shipped at 4°C. Upon delivery aliquot and store at -20°C for one year. Avoid freeze/thaw cycles.
Expiry Date:	12 months

Images



Immunohistochemistry

Image 1. Immunohistochemical analysis of PSKH1 staining in human brain formalin fixed paraffin embedded tissue section. The section was pre-treated using heat mediated antigen retrieval with sodium citrate buffer (pH 6.0). The section was then incubated with the a



Western Blotting

Image 2. Western blot analysis of PSKH1 expression in HeLa (A), HepG2 (B) whole cell lysates.