

Datasheet for ABIN7303062

anti-EPHA1 antibody**3** Images[Go to Product page](#)

Overview

Quantity:	100 µL
Target:	EPHA1
Reactivity:	Human
Host:	Rabbit
Clonality:	Polyclonal
Application:	Western Blotting (WB), Immunohistochemistry (IHC), Immunofluorescence (IF), Immunochromatography (IC)

Product Details

Immunogen:	KLH-conjugated synthetic peptide encompassing a sequence within the center region of human EPHA1.
Specificity:	Recognizes endogenous levels of EPHA1 protein.
Characteristics:	Rabbit polyclonal antibody to EPHA1
Purification:	The antibody was purified by affinity chromatography.

Target Details

Target:	EPHA1
Alternative Name:	EPHA1 (EPHA1 Products)
Background:	EPH, EPHT, EPHT1, Ephrin type-A receptor 1, hEpha1, EPH tyrosine kinase, EPH tyrosine kinase 1, Erythropoietin-producing hepatoma receptor, Tyrosine-protein kinase receptor EPH
Gene ID:	2041

Target Details

UniProt: [P21709](#)

Application Details

Application Notes: WB (1:500 - 1:1000), IH (1:100 - 1:200), IF/IC (1:100 - 1:500)

Restrictions: For Research Use only

Handling

Format: Liquid

Buffer: Liquid in PBS, pH 7.3, 0.2 % BSA, and 0.02 % sodium azide.

Preservative: Sodium azide

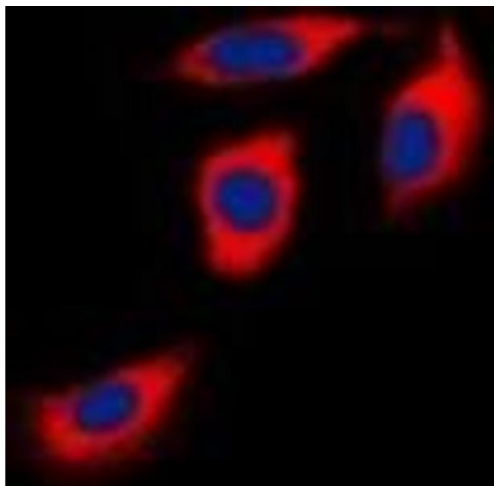
Precaution of Use: This product contains Sodium azide: a POISONOUS AND HAZARDOUS SUBSTANCE which should be handled by trained staff only.

Storage: -20 °C

Storage Comment: Shipped at 4°C. Upon delivery aliquot and store at -20°C for one year. Avoid freeze/thaw cycles.

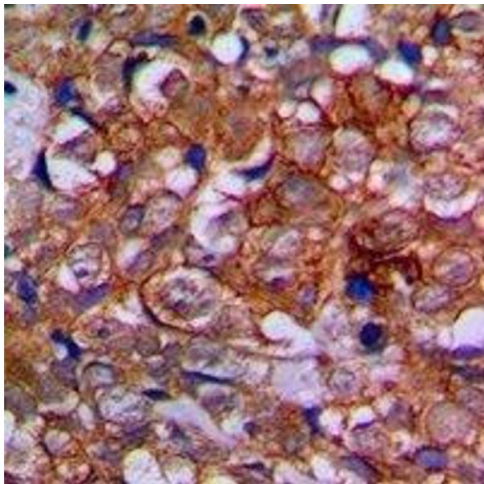
Expiry Date: 12 months

Images



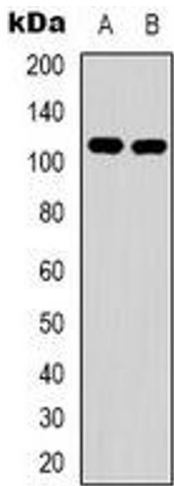
Immunofluorescence

Image 1. Immunofluorescent analysis of EPHA1 staining in Hela cells. Formalin-fixed cells were permeabilized with 0.1% Triton X-100 in TBS for 5-10 minutes and blocked with 3% BSA-PBS for 30 minutes at room temperature. Cells were probed with the primary antibody



Immunohistochemistry

Image 2. Immunohistochemical analysis of EPHA1 staining in human prostate cancer formalin fixed paraffin embedded tissue section. The section was pre-treated using heat mediated antigen retrieval with sodium citrate buffer (pH 6.0). The section was then incubated



Western Blotting

Image 3. Western blot analysis of EPHA1 expression in HeLa (A), HepG2 (B) whole cell lysates.