

Datasheet for ABIN7303066  
**anti-Recoverin antibody**

## 3 Images

[Go to Product page](#)

## Overview

Quantity:	100 µL
Target:	Recoverin (RCVRN)
Reactivity:	Human, Mouse, Rat, Pig
Host:	Rabbit
Clonality:	Polyclonal
Application:	Western Blotting (WB), Immunohistochemistry (IHC), Immunofluorescence (IF), Immunochromatography (IC)

## Product Details

Immunogen:	KLH-conjugated synthetic peptide encompassing a sequence within the center region of human Recoverin.
Specificity:	Recognizes endogenous levels of Recoverin protein.
Characteristics:	Rabbit polyclonal antibody to Recoverin
Purification:	The antibody was purified by affinity chromatography.

## Target Details

Target:	Recoverin (RCVRN)
Alternative Name:	Recoverin ( <a href="#">RCVRN Products</a> )
Background:	RCV1, Recoverin, Cancer-associated retinopathy protein, Protein CAR
Gene ID:	5957, 19674

## Target Details

UniProt:	<a href="#">P35243</a> , <a href="#">P34057</a>
Pathways:	<a href="#">Regulation of G-Protein Coupled Receptor Protein Signaling</a> , <a href="#">Phototransduction</a>

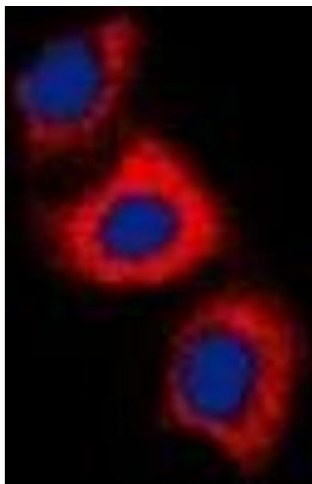
## Application Details

Application Notes:	WB (1:500 - 1:1000), IH (1:100 - 1:200), IF/IC (1:100 - 1:500)
Restrictions:	For Research Use only

## Handling

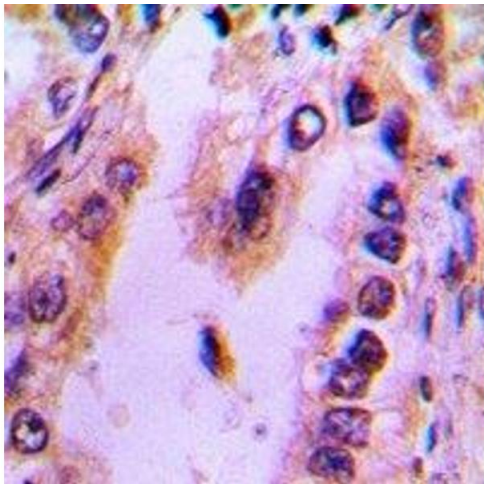
Format:	Liquid
Buffer:	Liquid in PBS, pH 7.3, 0.2 % BSA, and 0.02 % sodium azide.
Preservative:	Sodium azide
Precaution of Use:	This product contains Sodium azide: a POISONOUS AND HAZARDOUS SUBSTANCE which should be handled by trained staff only.
Storage:	-20 °C
Storage Comment:	Shipped at 4°C. Upon delivery aliquot and store at -20°C for one year. Avoid freeze/thaw cycles.
Expiry Date:	12 months

## Images



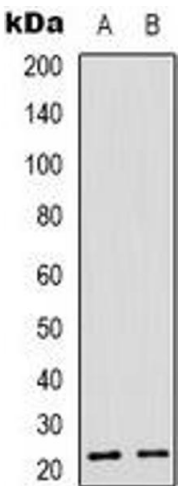
### Immunofluorescence

**Image 1.** Immunofluorescent analysis of Recoverin staining in HeLa cells. Formalin-fixed cells were permeabilized with 0.1% Triton X-100 in TBS for 5-10 minutes and blocked with 3% BSA-PBS for 30 minutes at room temperature. Cells were probed with the primary antibody.



Immunohistochemistry

**Image 2.** Immunohistochemical analysis of Recoverin staining in human lung cancer formalin fixed paraffin embedded tissue section. The section was pre-treated using heat mediated antigen retrieval with sodium citrate buffer (pH 6.0). The section was then incubated



Western Blotting

**Image 3.** Western blot analysis of Recoverin expression in Y79 (A), NIH3T3 (B) whole cell lysates.