

Datasheet for ABIN7303074
anti-MAP2K6 antibody (N-Term)

3 Images

[Go to Product page](#)

Overview

Quantity:	100 µL
Target:	MAP2K6
Binding Specificity:	N-Term
Reactivity:	Human, Mouse, Rat, Cow, Monkey
Host:	Rabbit
Clonality:	Polyclonal
Conjugate:	This MAP2K6 antibody is un-conjugated
Application:	Western Blotting (WB), Immunohistochemistry (IHC), Immunofluorescence (IF), Immunochromatography (IC)

Product Details

Immunogen:	KLH-conjugated synthetic peptide encompassing a sequence within the N-term region of human MKK6.
Specificity:	Recognizes endogenous levels of MKK6 protein.
Characteristics:	Rabbit polyclonal antibody to MKK6
Purification:	The antibody was purified by affinity chromatography.

Target Details

Target:	MAP2K6
Alternative Name:	MKK6 (MAP2K6 Products)

Target Details

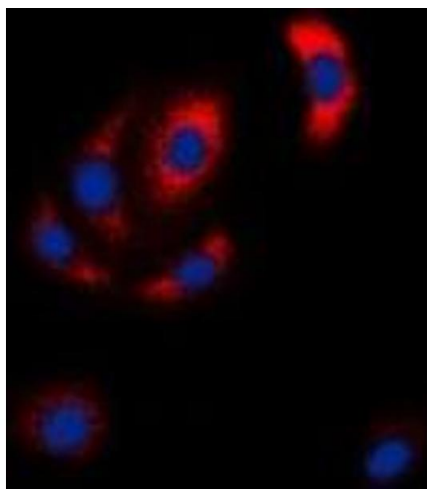
Background:	MEK6, MKK6, PRKMK6, SKK3, Dual specificity mitogen-activated protein kinase kinase 6, MAP kinase kinase 6, MAPKK 6, MAPK/ERK kinase 6, MEK 6, Stress-activated protein kinase kinase 3, SAPK kinase 3, SAPKK-3, SAPKK3
Gene ID:	5608, 26399
UniProt:	P52564 , P70236
Pathways:	MAPK Signaling , TLR Signaling , Activation of Innate immune Response , Regulation of Muscle Cell Differentiation , Toll-Like Receptors Cascades

Application Details

Application Notes:	WB (1:500 - 1:1000), IH (1:100 - 1:200), IF/IC (1:100 - 1:500)
Restrictions:	For Research Use only

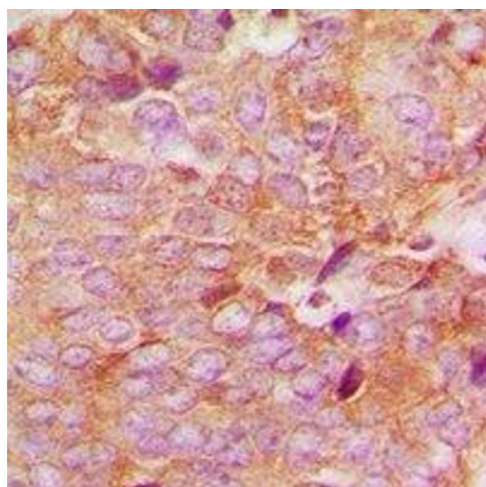
Handling

Format:	Liquid
Buffer:	Liquid in PBS, pH 7.3, 0.2 % BSA, and 0.02 % sodium azide.
Preservative:	Sodium azide
Precaution of Use:	This product contains Sodium azide: a POISONOUS AND HAZARDOUS SUBSTANCE which should be handled by trained staff only.
Storage:	-20 °C
Storage Comment:	Shipped at 4°C. Upon delivery aliquot and store at -20°C for one year. Avoid freeze/thaw cycles.
Expiry Date:	12 months



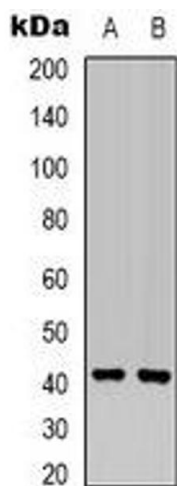
Immunofluorescence

Image 1. Immunofluorescent analysis of MKK6 staining in Hela cells. Formalin-fixed cells were permeabilized with 0.1% Triton X-100 in TBS for 5-10 minutes and blocked with 3% BSA-PBS for 30 minutes at room temperature. Cells were probed with the primary antibody i



Immunohistochemistry

Image 2. Immunohistochemical analysis of MKK6 staining in human breast cancer formalin fixed paraffin embedded tissue section. The section was pre-treated using heat mediated antigen retrieval with sodium citrate buffer (pH 6.0). The section was then incubated wit



Western Blotting

Image 3. Western blot analysis of MKK6 expression in Hela (A), HEK293T (B) whole cell lysates.