

Datasheet for ABIN7303080
anti-TEF antibody (C-Term)[Go to Product page](#)

2 Images

Overview

Quantity:	100 µL
Target:	TEF
Binding Specificity:	C-Term
Reactivity:	Human, Mouse, Rat, Chicken
Host:	Rabbit
Clonality:	Polyclonal
Application:	Western Blotting (WB), Immunohistochemistry (IHC)

Product Details

Immunogen:	KLH-conjugated synthetic peptide encompassing a sequence within the C-term region of human TEF.
Specificity:	Recognizes endogenous levels of TEF protein.
Characteristics:	Rabbit polyclonal antibody to TEF
Purification:	The antibody was purified by affinity chromatography.

Target Details

Target:	TEF
Alternative Name:	TEF (TEF Products)
Background:	KIAA1655, Thyrotroph embryonic factor
Gene ID:	7008, 21685, 29362

Target Details

UniProt: [Q10587](#), [Q9JLC6](#), [P41224](#)

Application Details

Application Notes: WB (1:500 - 1:1000), IH (1:100 - 1:200)

Restrictions: For Research Use only

Handling

Format: Liquid

Buffer: Liquid in PBS, pH 7.3, 0.2 % BSA, and 0.02 % sodium azide.

Preservative: Sodium azide

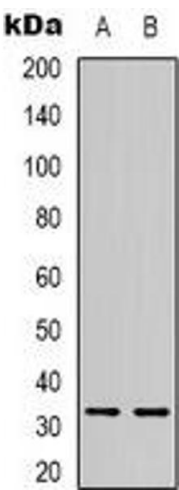
Precaution of Use: This product contains Sodium azide: a POISONOUS AND HAZARDOUS SUBSTANCE which should be handled by trained staff only.

Storage: -20 °C

Storage Comment: Shipped at 4°C. Upon delivery aliquot and store at -20°C for one year. Avoid freeze/thaw cycles.

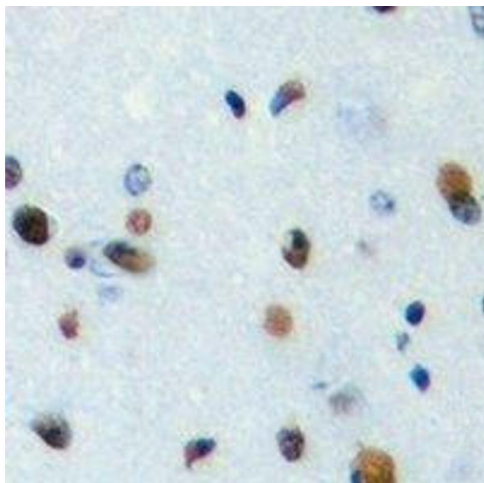
Expiry Date: 12 months

Images



Western Blotting

Image 1. Western blot analysis of TEF expression in Jurkat (A), mouse liver (B) whole cell lysates.



Immunohistochemistry

Image 2. Immunohistochemical analysis of TEF staining in human brain formalin fixed paraffin embedded tissue section. The section was pre-treated using heat mediated antigen retrieval with sodium citrate buffer (pH 6.0). The section was then incubated with the ant