

Datasheet for ABIN7303104

**anti-BTBD6 antibody****2** Images[Go to Product page](#)

## Overview

Quantity:	100 µL
Target:	BTBD6
Reactivity:	Human, Mouse, Rat, Cow, Zebrafish (Danio rerio)
Host:	Rabbit
Clonality:	Polyclonal
Conjugate:	This BTBD6 antibody is un-conjugated
Application:	Western Blotting (WB), Immunohistochemistry (IHC)

## Product Details

Immunogen:	KLH-conjugated synthetic peptide encompassing a sequence within the center region of human BTBD6.
Specificity:	Recognizes endogenous levels of BTBD6 protein.
Characteristics:	Rabbit polyclonal antibody to BTBD6
Purification:	The antibody was purified by affinity chromatography.

## Target Details

Target:	BTBD6
Alternative Name:	BTBD6 ( <a href="#">BTBD6 Products</a> )
Background:	BDPL, BTB/POZ domain-containing protein 6, Lens BTB domain protein
Gene ID:	90135, 399566

## Target Details

UniProt: [Q96KE9](#), [Q8K2J9](#)

## Application Details

Application Notes: WB (1:500 - 1:1000), IH (1:100 - 1:200)

Restrictions: For Research Use only

## Handling

Format: Liquid

Buffer: Liquid in PBS, pH 7.3, 0.2 % BSA, and 0.02 % sodium azide.

Preservative: Sodium azide

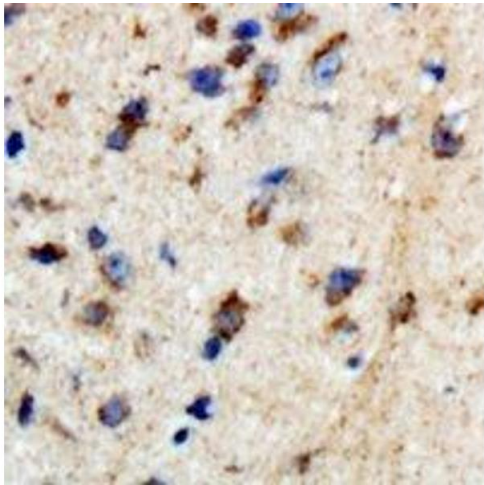
Precaution of Use: This product contains Sodium azide: a POISONOUS AND HAZARDOUS SUBSTANCE which should be handled by trained staff only.

Storage: -20 °C

Storage Comment: Shipped at 4°C. Upon delivery aliquot and store at -20°C for one year. Avoid freeze/thaw cycles.

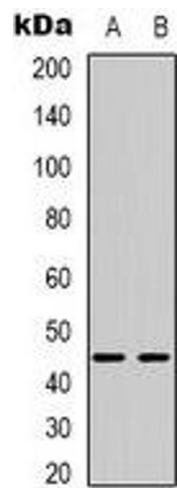
Expiry Date: 12 months

## Images



### Immunohistochemistry

**Image 1.** Immunohistochemical analysis of BTBD6 staining in human brain formalin fixed paraffin embedded tissue section. The section was pre-treated using heat mediated antigen retrieval with sodium citrate buffer (pH 6.0). The section was then incubated with the a



Western Blotting

**Image 2.** Western blot analysis of BTBD6 expression in HepG2 (A), MCF7 (B) whole cell lysates.