

Datasheet for ABIN7303106

anti-Cyclin-Dependent Kinase 15 (ALS2CR7) antibody**3** Images[Go to Product page](#)

Overview

| | |
|--------------|--|
| Quantity: | 100 µL |
| Target: | Cyclin-Dependent Kinase 15 (ALS2CR7) |
| Reactivity: | Human |
| Host: | Rabbit |
| Clonality: | Polyclonal |
| Conjugate: | Un-conjugated |
| Application: | Western Blotting (WB), Immunohistochemistry (IHC), Immunofluorescence (IF), Immunochromatography (IC) |

Product Details

| | |
|------------------|---|
| Immunogen: | KLH-conjugated synthetic peptide encompassing a sequence within the center region of human CDK15. |
| Specificity: | Recognizes endogenous levels of CDK15 protein. |
| Characteristics: | Rabbit polyclonal antibody to CDK15 |
| Purification: | The antibody was purified by affinity chromatography. |

Target Details

| | |
|-------------------|---|
| Target: | Cyclin-Dependent Kinase 15 (ALS2CR7) |
| Alternative Name: | CDK15 (ALS2CR7 Products) |
| Background: | ALS2CR7, PFTK2, Cyclin-dependent kinase 15, Amyotrophic lateral sclerosis 2 chromosomal region candidate gene 7 protein, Cell division protein kinase 15, Serine/threonine-protein kinase |

Target Details

ALS2CR7, Serine/threonine-protein kinase PFTAIRE-2

Gene ID: 65061

UniProt: [Q96Q40](#)

Application Details

Application Notes: WB (1:500 - 1:1000), IH (1:100 - 1:200), IF/IC (1:100 - 1:500)

Restrictions: For Research Use only

Handling

Format: Liquid

Buffer: Liquid in PBS, pH 7.3, 0.2 % BSA, and 0.02 % sodium azide.

Preservative: Sodium azide

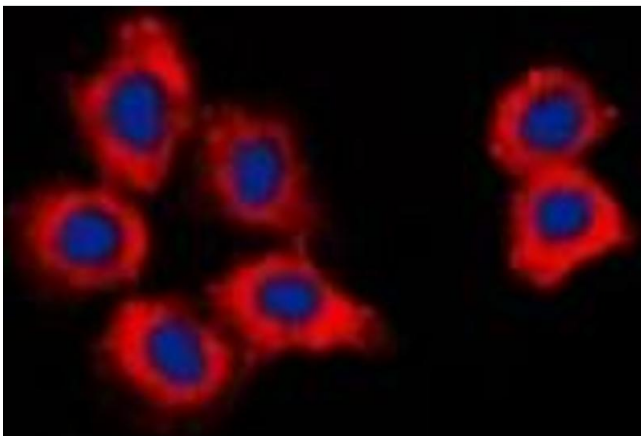
Precaution of Use: This product contains Sodium azide: a POISONOUS AND HAZARDOUS SUBSTANCE which should be handled by trained staff only.

Storage: -20 °C

Storage Comment: Shipped at 4°C. Upon delivery aliquot and store at -20°C for one year. Avoid freeze/thaw cycles.

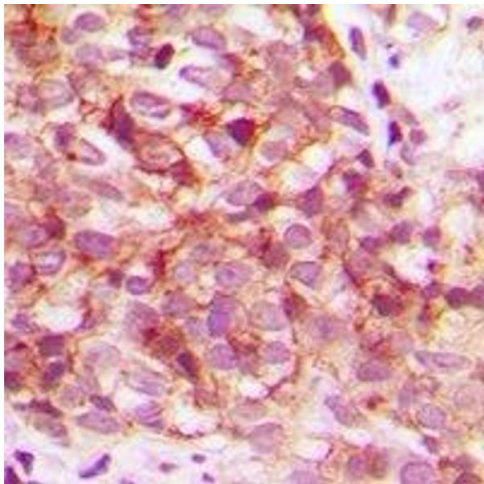
Expiry Date: 12 months

Images



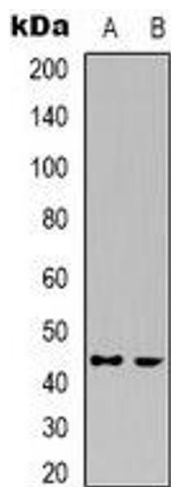
Immunofluorescence

Image 1. Immunofluorescent analysis of CDK15 staining in HepG2 cells. Formalin-fixed cells were permeabilized with 0.1% Triton X-100 in TBS for 5-10 minutes and blocked with 3% BSA-PBS for 30 minutes at room temperature. Cells were probed with the primary antibody



Immunohistochemistry

Image 2. Immunohistochemical analysis of CDK15 staining in human breast cancer formalin fixed paraffin embedded tissue section. The section was pre-treated using heat mediated antigen retrieval with sodium citrate buffer (pH 6.0). The section was then incubated wi



Western Blotting

Image 3. Western blot analysis of CDK15 expression in HepG2 (A), Jurkat (B) whole cell lysates.