

Datasheet for ABIN7303116
anti-AKIP1 antibody



[Go to Product page](#)

2 Images

Overview

Quantity:	100 µL
Target:	AKIP1
Reactivity:	Human, Monkey
Host:	Rabbit
Clonality:	Polyclonal
Conjugate:	This AKIP1 antibody is un-conjugated
Application:	Western Blotting (WB), Immunohistochemistry (IHC)

Product Details

Immunogen:	KLH-conjugated synthetic peptide encompassing a sequence within the center region of human BCA3.
Specificity:	Recognizes endogenous levels of BCA3 protein.
Characteristics:	Rabbit polyclonal antibody to BCA3
Purification:	The antibody was purified by affinity chromatography.

Target Details

Target:	AKIP1
Alternative Name:	BCA3 (AKIP1 Products)
Background:	BCA3, C11orf17, A-kinase-interacting protein 1, Breast cancer-associated gene 3 protein, PKA-interacting protein, Proline-rich protein BCA3

Target Details

Gene ID: 56672

UniProt: [Q9NQ31](#)

Application Details

Application Notes: WB (1:500 - 1:1000), IH (1:100 - 1:200)

Restrictions: For Research Use only

Handling

Format: Liquid

Buffer: Liquid in PBS, pH 7.3, 0.2 % BSA, and 0.02 % sodium azide.

Preservative: Sodium azide

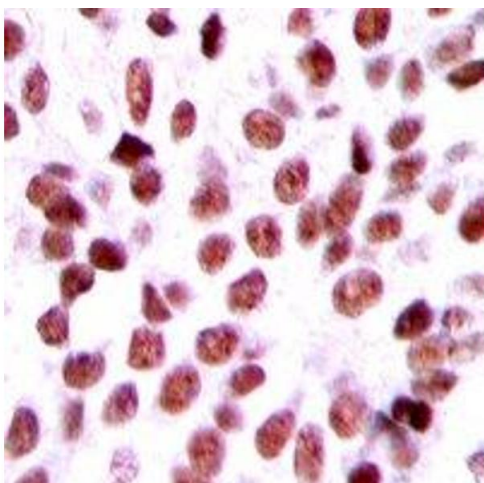
Precaution of Use: This product contains Sodium azide: a POISONOUS AND HAZARDOUS SUBSTANCE which should be handled by trained staff only.

Storage: -20 °C

Storage Comment: Shipped at 4°C. Upon delivery aliquot and store at -20°C for one year. Avoid freeze/thaw cycles.

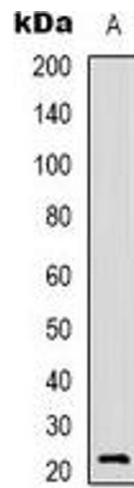
Expiry Date: 12 months

Images



Immunohistochemistry

Image 1. Immunohistochemical analysis of BCA3 staining in human breast cancer formalin fixed paraffin embedded tissue section. The section was pre-treated using heat mediated antigen retrieval with sodium citrate buffer (pH 6.0). The section was then incubated with



Western Blotting

Image 2. Western blot analysis of BCA3 expression in A549 (A) whole cell lysates.