

Datasheet for ABIN7303128  
**anti-TCFL5 antibody (C-Term)**[Go to Product page](#)

## 2 Images

## Overview

Quantity:	100 µL
Target:	TCFL5
Binding Specificity:	C-Term
Reactivity:	Human, Mouse, Monkey
Host:	Rabbit
Clonality:	Polyclonal
Application:	Western Blotting (WB), Immunohistochemistry (IHC)

## Product Details

Immunogen:	KLH-conjugated synthetic peptide encompassing a sequence within the C-term region of human TCFL5.
Specificity:	Recognizes endogenous levels of TCFL5 protein.
Characteristics:	Rabbit polyclonal antibody to TCFL5
Purification:	The antibody was purified by affinity chromatography.

## Target Details

Target:	TCFL5
Alternative Name:	TCFL5 ( <a href="#">TCFL5 Products</a> )
Background:	CHA, E2BP1, Transcription factor-like 5 protein, Cha transcription factor, HPV-16 E2-binding protein 1, E2BP-1

## Target Details

Gene ID: 10732

UniProt: [Q9UL49](#)

## Application Details

Application Notes: WB (1:500 - 1:1000), IH (1:100 - 1:200)

Restrictions: For Research Use only

## Handling

Format: Liquid

Buffer: Liquid in PBS, pH 7.3, 0.2 % BSA, and 0.02 % sodium azide.

Preservative: Sodium azide

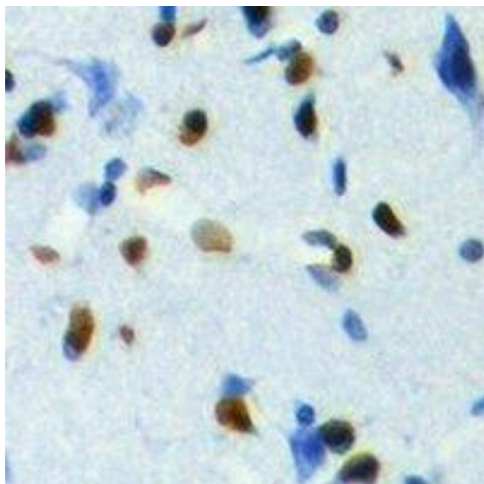
Precaution of Use: This product contains Sodium azide: a POISONOUS AND HAZARDOUS SUBSTANCE which should be handled by trained staff only.

Storage: -20 °C

Storage Comment: Shipped at 4°C. Upon delivery aliquot and store at -20°C for one year. Avoid freeze/thaw cycles.

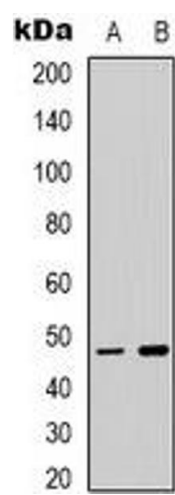
Expiry Date: 12 months

## Images



### Immunohistochemistry

**Image 1.** Immunohistochemical analysis of TCFL5 staining in human brain formalin fixed paraffin embedded tissue section. The section was pre-treated using heat mediated antigen retrieval with sodium citrate buffer (pH 6.0). The section was then incubated with the a



Western Blotting

**Image 2.** Western blot analysis of TCFL5 expression in HepG2 (A), RAW264.7 (B) whole cell lysates.