

Datasheet for ABIN7303140  
**anti-SUPT16H antibody (C-Term)**[Go to Product page](#)

## 2 Images

## Overview

Quantity:	100 µL
Target:	SUPT16H
Binding Specificity:	C-Term
Reactivity:	Human, Mouse, Rat
Host:	Rabbit
Clonality:	Polyclonal
Conjugate:	This SUPT16H antibody is un-conjugated
Application:	Western Blotting (WB), Immunohistochemistry (IHC)

## Product Details

Immunogen:	KLH-conjugated synthetic peptide encompassing a sequence within the C-term region of human SUPT16H.
Specificity:	Recognizes endogenous levels of SUPT16H protein.
Characteristics:	Rabbit polyclonal antibody to SUPT16H
Purification:	The antibody was purified by affinity chromatography.

## Target Details

Target:	SUPT16H
Alternative Name:	SUPT16H ( <a href="#">SUPT16H Products</a> )
Background:	FACT140, FACTP140, FACT complex subunit SPT16, Chromatin-specific transcription

Target Details

	elongation factor 140 kDa subunit, FACT 140 kDa subunit, FACTp140, Facilitates chromatin transcription complex subunit SPT16, hSPT16
Gene ID:	11198, 114741
UniProt:	<a href="#">Q9Y5B9</a> , <a href="#">Q920B9</a>
Pathways:	<a href="#">Chromatin Binding</a>

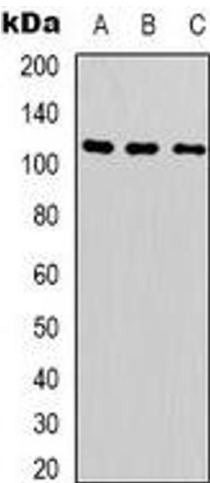
Application Details

Application Notes:	WB (1:500 - 1:1000), IH (1:100 - 1:200)
Restrictions:	For Research Use only

Handling

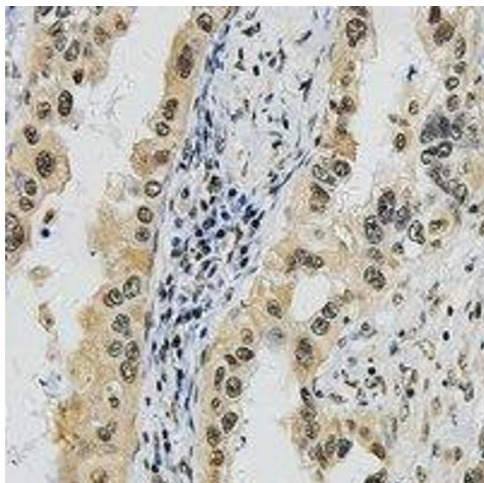
Format:	Liquid
Buffer:	Liquid in PBS, pH 7.3, 0.2 % BSA, and 0.02 % sodium azide.
Preservative:	Sodium azide
Precaution of Use:	This product contains Sodium azide: a POISONOUS AND HAZARDOUS SUBSTANCE which should be handled by trained staff only.
Storage:	-20 °C
Storage Comment:	Shipped at 4°C. Upon delivery aliquot and store at -20°C for one year. Avoid freeze/thaw cycles.
Expiry Date:	12 months

Images



Western Blotting

**Image 1.** Western blot analysis of SUPT16H expression in Hela (A), A549 (B), Jurkat (C) whole cell lysates.



#### Immunohistochemistry

**Image 2.** Immunohistochemical analysis of SUPT16H staining in human lung cancer formalin fixed paraffin embedded tissue section. The section was pre-treated using heat mediated antigen retrieval with sodium citrate buffer (pH 6.0). The section was then incubated wi