



[Go to Product page](#)

Datasheet for ABIN7303158
anti-CADM2 antibody

3 Images

Overview

Quantity:	100 µL
Target:	CADM2
Reactivity:	Human, Mouse, Rat
Host:	Rabbit
Clonality:	Polyclonal
Conjugate:	This CADM2 antibody is un-conjugated
Application:	Western Blotting (WB), Immunohistochemistry (IHC), Immunofluorescence (IF), Immunochromatography (IC)

Product Details

Immunogen:	KLH-conjugated synthetic peptide encompassing a sequence within the center region of human CADM2.
Specificity:	Recognizes endogenous levels of CADM2 protein.
Characteristics:	Rabbit polyclonal antibody to CADM2
Purification:	The antibody was purified by affinity chromatography.

Target Details

Target:	CADM2
Alternative Name:	CADM2 (CADM2 Products)
Background:	IGSF4D, NECL3, Cell adhesion molecule 2, Immunoglobulin superfamily member 4D, IGSF4D, Nectin-like protein 3, NECL-3, Synaptic cell adhesion molecule 2, SynCAM 2

Target Details

Gene ID:	253559, 239857, 360687
UniProt:	Q8N3J6 , Q8BLQ9 , Q1WIM2
Pathways:	Cell-Cell Junction Organization

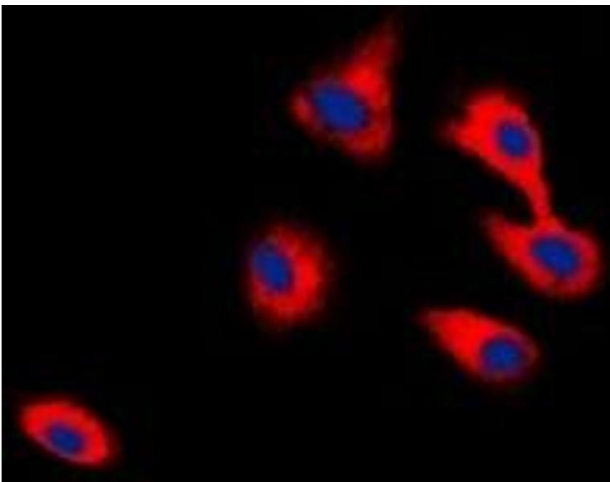
Application Details

Application Notes:	WB (1:500 - 1:1000), IH (1:100 - 1:200), IF/IC (1:100 - 1:500)
Restrictions:	For Research Use only

Handling

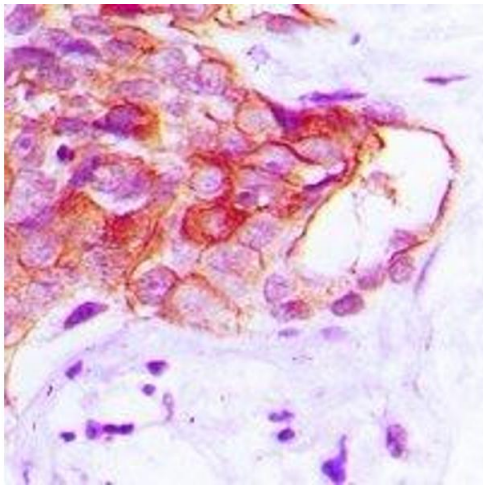
Format:	Liquid
Buffer:	Liquid in PBS, pH 7.3, 0.2 % BSA, and 0.02 % sodium azide.
Preservative:	Sodium azide
Precaution of Use:	This product contains Sodium azide: a POISONOUS AND HAZARDOUS SUBSTANCE which should be handled by trained staff only.
Storage:	-20 °C
Storage Comment:	Shipped at 4°C. Upon delivery aliquot and store at -20°C for one year. Avoid freeze/thaw cycles.
Expiry Date:	12 months

Images



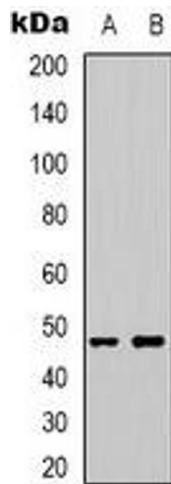
Immunofluorescence

Image 1. Immunofluorescent analysis of CADM2 staining in HepG2 cells. Formalin-fixed cells were permeabilized with 0.1% Triton X-100 in TBS for 5-10 minutes and blocked with 3% BSA-PBS for 30 minutes at room temperature. Cells were probed with the primary antibody



Immunohistochemistry

Image 2. Immunohistochemical analysis of CADM2 staining in human prostate cancer formalin fixed paraffin embedded tissue section. The section was pre-treated using heat mediated antigen retrieval with sodium citrate buffer (pH 6.0). The section was then incubated



Western Blotting

Image 3. Western blot analysis of CADM2 expression in HepG2 (A), mouse brain (B) whole cell lysates.