

Datasheet for ABIN7303162
anti-CARD11 antibody (N-Term)

3 Images

[Go to Product page](#)

Overview

Quantity:	100 µL
Target:	CARD11
Binding Specificity:	N-Term
Reactivity:	Human, Mouse
Host:	Rabbit
Clonality:	Polyclonal
Conjugate:	This CARD11 antibody is un-conjugated
Application:	Western Blotting (WB), Immunohistochemistry (IHC), Immunofluorescence (IF), Immunochromatography (IC)

Product Details

Immunogen:	KLH-conjugated synthetic peptide encompassing a sequence within the N-term region of human CARD11.
Specificity:	Recognizes endogenous levels of CARD11 protein.
Characteristics:	Rabbit polyclonal antibody to CARD11
Purification:	The antibody was purified by affinity chromatography.

Target Details

Target:	CARD11
Alternative Name:	CARD11 (CARD11 Products)

Target Details

Background:	CARMA1, Caspase recruitment domain-containing protein 11, CARD-containing MAGUK protein 1, Carma 1
Gene ID:	84433, 108723
UniProt:	Q9BXL7 , Q8CIS0
Pathways:	TCR Signaling , Fc-epsilon Receptor Signaling Pathway , BCR Signaling

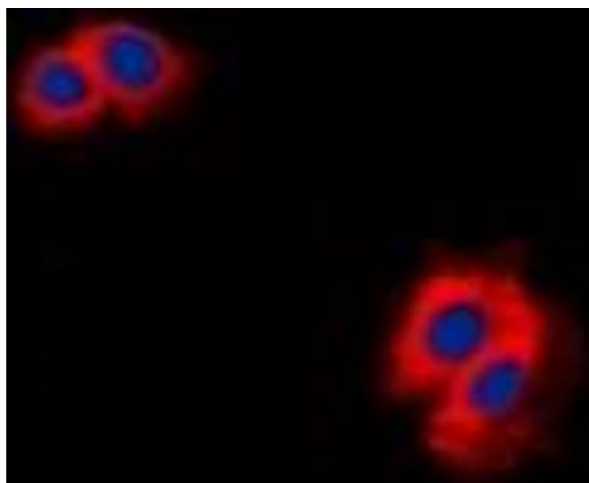
Application Details

Application Notes:	WB (1:500 - 1:1000), IH (1:100 - 1:200), IF/IC (1:100 - 1:500)
Restrictions:	For Research Use only

Handling

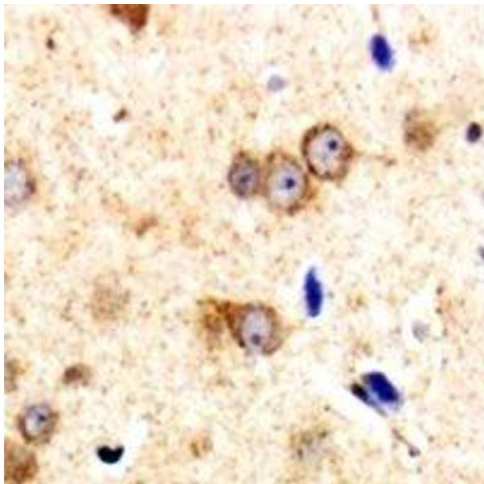
Format:	Liquid
Buffer:	Liquid in PBS, pH 7.3, 0.2 % BSA, and 0.02 % sodium azide.
Preservative:	Sodium azide
Precaution of Use:	This product contains Sodium azide: a POISONOUS AND HAZARDOUS SUBSTANCE which should be handled by trained staff only.
Storage:	-20 °C
Storage Comment:	Shipped at 4°C. Upon delivery aliquot and store at -20°C for one year. Avoid freeze/thaw cycles.
Expiry Date:	12 months

Images



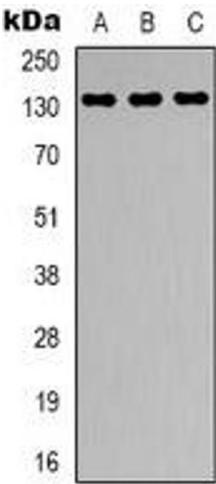
Immunofluorescence

Image 1. Immunofluorescent analysis of CARD11 staining in K562 cells. Formalin-fixed cells were permeabilized with 0.1% Triton X-100 in TBS for 5-10 minutes and blocked with 3% BSA-PBS for 30 minutes at room temperature. Cells were probed with the primary antibody



Immunohistochemistry

Image 2. Immunohistochemical analysis of CARD11 staining in human brain formalin fixed paraffin embedded tissue section. The section was pre-treated using heat mediated antigen retrieval with sodium citrate buffer (pH 6.0). The section was then incubated with the



Western Blotting

Image 3. Western blot analysis of CARD11 expression in K562 (A), Ramos (B), Jurkat (C) whole cell lysates.