

Datasheet for ABIN7303168
anti-GSPT1 antibody



[Go to Product page](#)

2 Images

Overview

Quantity:	100 µL
Target:	GSPT1
Reactivity:	Human, Mouse, Zebrafish (Danio rerio)
Host:	Rabbit
Clonality:	Polyclonal
Application:	Immunohistochemistry (IHC), Western Blotting (WB)

Product Details

Immunogen:	KLH-conjugated synthetic peptide encompassing a sequence within the center region of human GSPT1.
Specificity:	Recognizes endogenous levels of GSPT1 protein.
Characteristics:	Rabbit polyclonal antibody to GSPT1
Purification:	The antibody was purified by affinity chromatography.

Target Details

Target:	GSPT1
Alternative Name:	GSPT1 (GSPT1 Products)
Background:	ERF3A, Eukaryotic peptide chain release factor GTP-binding subunit ERF3A, Eukaryotic peptide chain release factor subunit 3a, eRF3a, G1 to S phase transition protein 1 homolog
Gene ID:	2935, 14852

Target Details

UniProt: [P15170, Q8R050](#)

Application Details

Application Notes: WB (1:500 - 1:1000), IH (1:100 - 1:200)

Restrictions: For Research Use only

Handling

Format: Liquid

Buffer: Liquid in PBS, pH 7.3, 0.2 % BSA, and 0.02 % sodium azide.

Preservative: Sodium azide

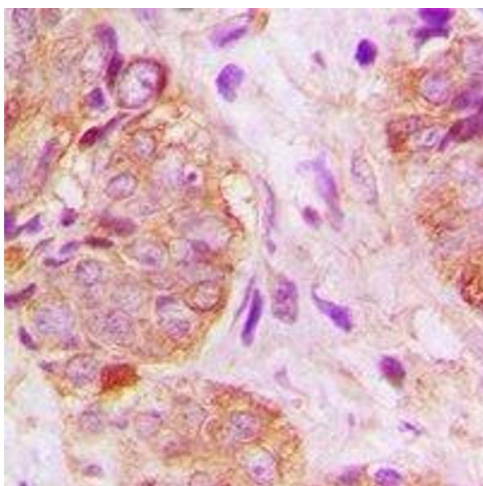
Precaution of Use: This product contains Sodium azide: a POISONOUS AND HAZARDOUS SUBSTANCE which should be handled by trained staff only.

Storage: -20 °C

Storage Comment: Shipped at 4°C. Upon delivery aliquot and store at -20°C for one year. Avoid freeze/thaw cycles.

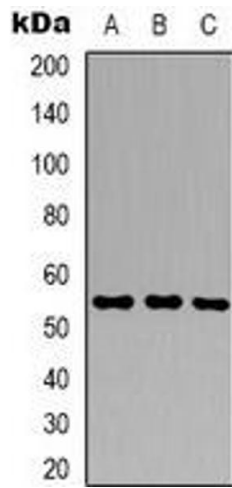
Expiry Date: 12 months

Images



Immunohistochemistry

Image 1. Immunohistochemical analysis of GSPT1 staining in human breast cancer formalin fixed paraffin embedded tissue section. The section was pre-treated using heat mediated antigen retrieval with sodium citrate buffer (pH 6.0). The section was then incubated wi



Western Blotting

Image 2. Western blot analysis of GSPT1 expression in HeLa (A), HepG2 (B), NIH3T3 (C) whole cell lysates.