

Datasheet for ABIN7303176
anti-MSH2 antibody

3 Images



[Go to Product page](#)

Overview

Quantity:	100 µL
Target:	MSH2
Reactivity:	Human, Mouse, Rat, Dog, Monkey
Host:	Rabbit
Clonality:	Polyclonal
Conjugate:	This MSH2 antibody is un-conjugated
Application:	Western Blotting (WB), Immunohistochemistry (IHC), Immunofluorescence (IF), Immunochromatography (IC)

Product Details

Immunogen:	KLH-conjugated synthetic peptide encompassing a sequence within the center region of human MSH2.
Specificity:	Recognizes endogenous levels of MSH2 protein.
Characteristics:	Rabbit polyclonal antibody to MSH2
Purification:	The antibody was purified by affinity chromatography.

Target Details

Target:	MSH2
Alternative Name:	MSH2 (MSH2 Products)
Background:	DNA mismatch repair protein Msh2, hMSH2, MutS protein homolog 2

Target Details

Gene ID:	4436, 17685, 81709
UniProt:	P43246 , P43247 , P54275
Pathways:	DNA Damage Repair , Production of Molecular Mediator of Immune Response

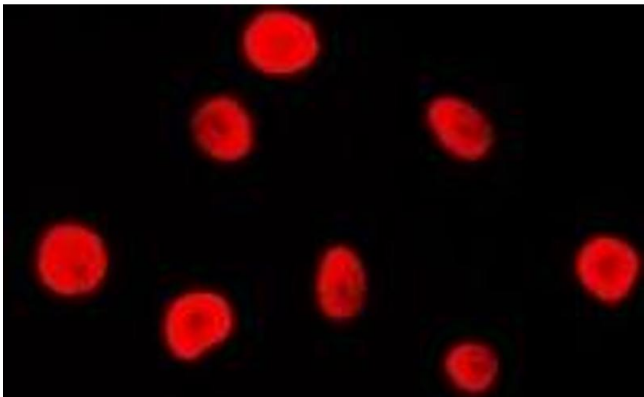
Application Details

Application Notes:	WB (1:500 - 1:1000), IH (1:100 - 1:200), IF/IC (1:100 - 1:500)
Restrictions:	For Research Use only

Handling

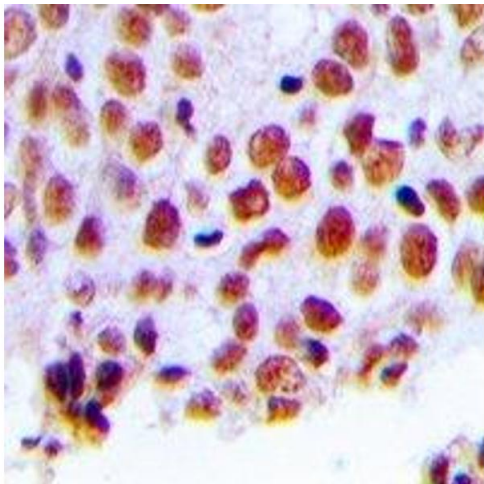
Format:	Liquid
Buffer:	Liquid in PBS, pH 7.3, 0.2 % BSA, and 0.02 % sodium azide.
Preservative:	Sodium azide
Precaution of Use:	This product contains Sodium azide: a POISONOUS AND HAZARDOUS SUBSTANCE which should be handled by trained staff only.
Storage:	-20 °C
Storage Comment:	Shipped at 4°C. Upon delivery aliquot and store at -20°C for one year. Avoid freeze/thaw cycles.
Expiry Date:	12 months

Images



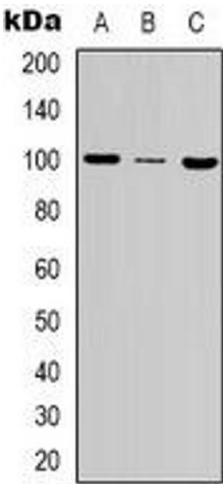
Immunofluorescence

Image 1. Immunofluorescent analysis of MSH2 staining in HeLa cells. Formalin-fixed cells were permeabilized with 0.1% Triton X-100 in TBS for 5-10 minutes and blocked with 3% BSA-PBS for 30 minutes at room temperature. Cells were probed with the primary antibody i



Immunohistochemistry

Image 2. Immunohistochemical analysis of MSH2 staining in human breast cancer formalin fixed paraffin embedded tissue section. The section was pre-treated using heat mediated antigen retrieval with sodium citrate buffer (pH 6.0). The section was then incubated with



Western Blotting

Image 3. Western blot analysis of MSH2 expression in Hela (A), A431 (B), NIH3T3 (C) whole cell lysates.