

Datasheet for ABIN7303180

anti-MRPL22 antibody**2** Images[Go to Product page](#)

Overview

Quantity:	100 µL
Target:	MRPL22
Reactivity:	Human, Mouse, Rat, Cow
Host:	Rabbit
Clonality:	Polyclonal
Conjugate:	This MRPL22 antibody is un-conjugated
Application:	Western Blotting (WB), Immunohistochemistry (IHC)

Product Details

Immunogen:	KLH-conjugated synthetic peptide encompassing a sequence within the center region of human MRPL22.
Specificity:	Recognizes endogenous levels of MRPL22 protein.
Characteristics:	Rabbit polyclonal antibody to MRPL22
Purification:	The antibody was purified by affinity chromatography.

Target Details

Target:	MRPL22
Alternative Name:	MRPL22 (MRPL22 Products)
Background:	MRPL25, RPML25, 39S ribosomal protein L22, mitochondrial, L22mt, MRP-L22, 39S ribosomal protein L25, mitochondrial, L25mt, MRP-L25

Target Details

Gene ID: 29093, 216767, 287302

UniProt: [Q9NWU5](#), [Q8BU88](#), [P0C2C0](#)

Application Details

Application Notes: WB (1:500 - 1:1000), IH (1:100 - 1:200)

Restrictions: For Research Use only

Handling

Format: Liquid

Buffer: Liquid in PBS, pH 7.3, 0.2 % BSA, and 0.02 % sodium azide.

Preservative: Sodium azide

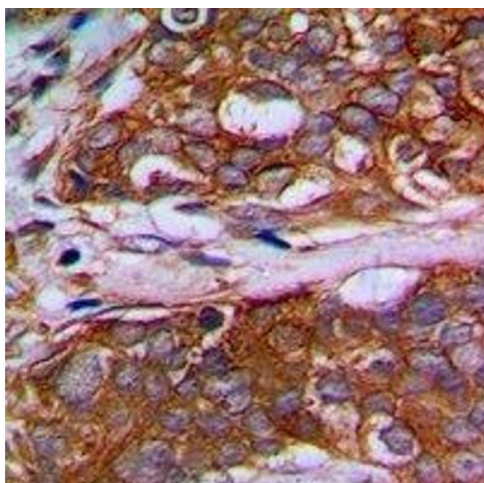
Precaution of Use: This product contains Sodium azide: a POISONOUS AND HAZARDOUS SUBSTANCE which should be handled by trained staff only.

Storage: -20 °C

Storage Comment: Shipped at 4°C. Upon delivery aliquot and store at -20°C for one year. Avoid freeze/thaw cycles.

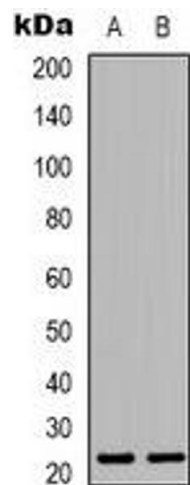
Expiry Date: 12 months

Images



Immunohistochemistry

Image 1. Immunohistochemical analysis of MRPL22 staining in human prostate cancer formalin fixed paraffin embedded tissue section. The section was pre-treated using heat mediated antigen retrieval with sodium citrate buffer (pH 6.0). The section was then incubated



Western Blotting

Image 2. Western blot analysis of MRPL22 expression in HeLa (A), HepG2 (B) whole cell lysates.