

Datasheet for ABIN7303188

anti-APBB2 antibody**2** Images[Go to Product page](#)

Overview

Quantity:	100 µL
Target:	APBB2
Reactivity:	Human, Mouse, Rat, Cow
Host:	Rabbit
Clonality:	Polyclonal
Conjugate:	This APBB2 antibody is un-conjugated
Application:	Western Blotting (WB), Immunohistochemistry (IHC)

Product Details

Immunogen:	KLH-conjugated synthetic peptide encompassing a sequence within the center region of human APBB2.
Specificity:	Recognizes endogenous levels of APBB2 protein.
Characteristics:	Rabbit polyclonal antibody to APBB2
Purification:	The antibody was purified by affinity chromatography.

Target Details

Target:	APBB2
Alternative Name:	APBB2 (APBB2 Products)
Background:	FE65L, FE65L1, Amyloid beta A4 precursor protein-binding family B member 2, Protein Fe65-like 1

Target Details

Gene ID:	323, 11787
UniProt:	Q92870 , Q9DBR4

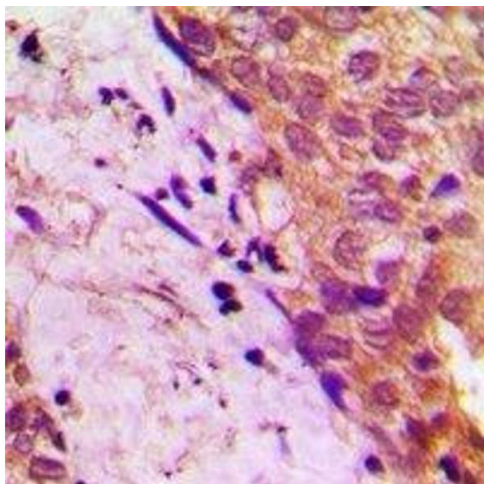
Application Details

Application Notes:	WB (1:500 - 1:1000), IH (1:100 - 1:200)
Restrictions:	For Research Use only

Handling

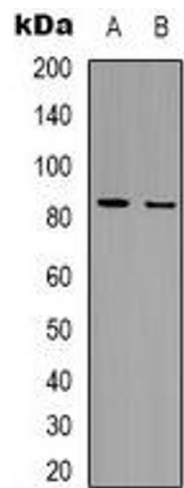
Format:	Liquid
Buffer:	Liquid in PBS, pH 7.3, 0.2 % BSA, and 0.02 % sodium azide.
Preservative:	Sodium azide
Precaution of Use:	This product contains Sodium azide: a POISONOUS AND HAZARDOUS SUBSTANCE which should be handled by trained staff only.
Storage:	-20 °C
Storage Comment:	Shipped at 4°C. Upon delivery aliquot and store at -20°C for one year. Avoid freeze/thaw cycles.
Expiry Date:	12 months

Images



Immunohistochemistry

Image 1. Immunohistochemical analysis of APBB2 staining in human prostate cancer formalin fixed paraffin embedded tissue section. The section was pre-treated using heat mediated antigen retrieval with sodium citrate buffer (pH 6.0). The section was then incubated



Western Blotting

Image 2. Western blot analysis of APBB2 expression in HEK293T (A), Jurkat (B) whole cell lysates.