

Datasheet for ABIN7303206

anti-CBR3 antibody**2** Images[Go to Product page](#)

Overview

Quantity:	100 µL
Target:	CBR3
Reactivity:	Human, Mouse, Rat, Cow, Monkey
Host:	Rabbit
Clonality:	Polyclonal
Conjugate:	This CBR3 antibody is un-conjugated
Application:	Western Blotting (WB), Immunohistochemistry (IHC)

Product Details

Immunogen:	KLH-conjugated synthetic peptide encompassing a sequence within the center region of human CBR3.
Specificity:	Recognizes endogenous levels of CBR3 protein.
Characteristics:	Rabbit polyclonal antibody to CBR3
Purification:	The antibody was purified by affinity chromatography.

Target Details

Target:	CBR3
Alternative Name:	CBR3 (CBR3 Products)
Background:	Carbonyl reductase [NADPH] 3, NADPH-dependent carbonyl reductase 3
Gene ID:	874, 109857

Target Details

UniProt: [O75828](#), [Q8K354](#)

Application Details

Application Notes: WB (1:500 - 1:1000), IH (1:100 - 1:200)

Restrictions: For Research Use only

Handling

Format: Liquid

Buffer: Liquid in PBS, pH 7.3, 0.2 % BSA, and 0.02 % sodium azide.

Preservative: Sodium azide

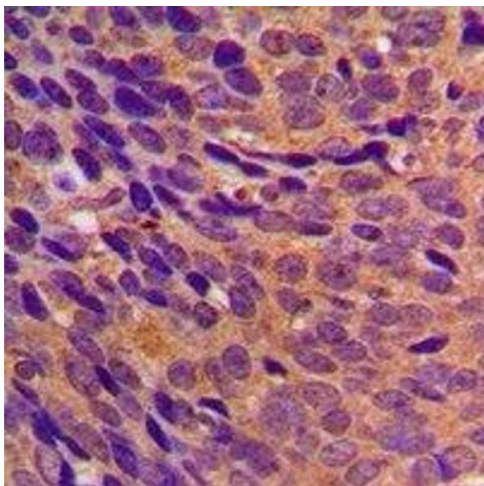
Precaution of Use: This product contains Sodium azide: a POISONOUS AND HAZARDOUS SUBSTANCE which should be handled by trained staff only.

Storage: -20 °C

Storage Comment: Shipped at 4°C. Upon delivery aliquot and store at -20°C for one year. Avoid freeze/thaw cycles.

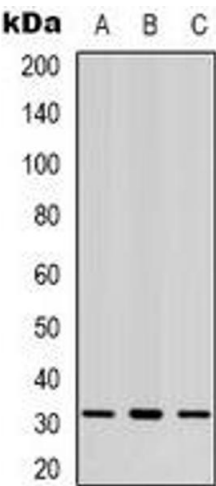
Expiry Date: 12 months

Images



Immunohistochemistry

Image 1. Immunohistochemical analysis of CBR3 staining in human breast cancer formalin fixed paraffin embedded tissue section. The section was pre-treated using heat mediated antigen retrieval with sodium citrate buffer (pH 6.0). The section was then incubated with



Western Blotting

Image 2. Western blot analysis of CBR3 expression in K562 (A), MCF7 (B), HeLa (C) whole cell lysates.