



[Go to Product page](#)

Datasheet for ABIN7303210

## anti-Cep76 antibody

### 2 Images

#### Overview

Quantity:	100 µL
Target:	Cep76
Reactivity:	Human, Mouse, Rat, Zebrafish (Danio rerio), Monkey
Host:	Rabbit
Clonality:	Polyclonal
Conjugate:	This Cep76 antibody is un-conjugated
Application:	Western Blotting (WB), Immunohistochemistry (IHC)

#### Product Details

Immunogen:	KLH-conjugated synthetic peptide encompassing a sequence within the center region of human CEP76.
Specificity:	Recognizes endogenous levels of CEP76 protein.
Characteristics:	Rabbit polyclonal antibody to CEP76
Purification:	The antibody was purified by affinity chromatography.

#### Target Details

Target:	Cep76
Alternative Name:	CEP76 ( <a href="#">Cep76 Products</a> )
Background:	C18orf9, Centrosomal protein of 76 kDa, Cep76
Gene ID:	79959, 225659

## Target Details

UniProt: [Q8TAP6, Q0VEJ0](#)

Pathways: [M Phase](#)

## Application Details

Application Notes: WB (1:500 - 1:1000), IH (1:100 - 1:200)

Restrictions: For Research Use only

## Handling

Format: Liquid

Buffer: Liquid in PBS, pH 7.3, 0.2 % BSA, and 0.02 % sodium azide.

Preservative: Sodium azide

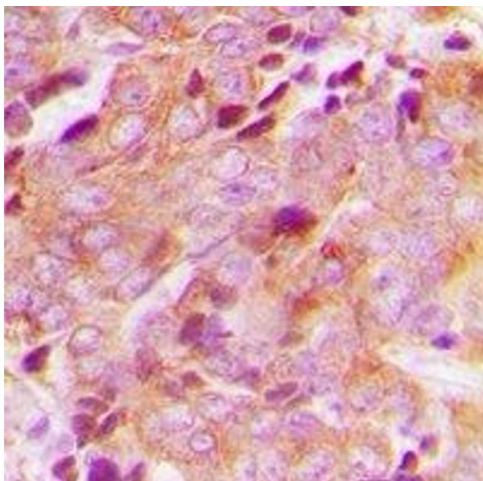
Precaution of Use: This product contains Sodium azide: a POISONOUS AND HAZARDOUS SUBSTANCE which should be handled by trained staff only.

Storage: -20 °C

Storage Comment: Shipped at 4°C. Upon delivery aliquot and store at -20°C for one year. Avoid freeze/thaw cycles.

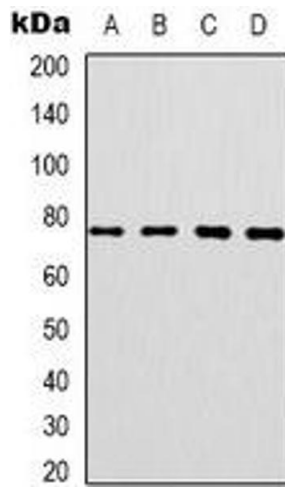
Expiry Date: 12 months

## Images



### Immunohistochemistry

**Image 1.** Immunohistochemical analysis of CEP76 staining in human breast cancer formalin fixed paraffin embedded tissue section. The section was pre-treated using heat mediated antigen retrieval with sodium citrate buffer (pH 6.0). The section was then incubated wi



### Western Blotting

**Image 2.** Western blot analysis of CEP76 expression in SKOV3 (A), HT29 (B), HepG2 (C), NIH3T3 (D) whole cell lysates.